

List & Label 16 full speed ahead

Touch-and-go – List & Label 16 is heading for your success. Beyond the horizon: Designer is far more intuitive and productive, documentation fine-tuned, .NET data connection optimized in the wind tunnel and abundant gauges for your dashboard.

Did you know that already in version 15 List & Label offered the greatest flexibility with the type of data that can be reported, the supported programming languages and the most export and barcode formats compared to other report generators? It offered the optimum technical basis for further refinements with a lot of engineering to shift into a higher gear.

One of the many highlights, which are hidden underneath the hood of V16 is a multitude of gauges. They provide an immediate overview of the most important data, including their success rates, i.e. the relationship between maximum, minimum and ideal values. The gauges thus provide clear and transparent signals.

"It is the best List & Label version we've ever had," says Jochen Bartlau of Version 16. "I know that I say it every time but this time is now true as never before," he says with a smile. Yes, V16 is everything other than a spoil sport for him and the development team. And their baby also proves that this is so. Take a quick cruise here through the details. Again there are all sorts of extras available already along with the base model. No question V8 is out, long live V16 ;-)

*And in the home stretch
one more factor:
V16 is compatible with
Delphi XE*

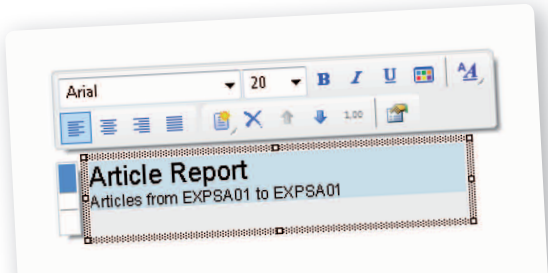
LL16 Highlights

- ➔ **More intuitive Designer** :: Mini toolbars :: New input assistants :: Improved selection and alignment :: And much more has been improved
- More productive** :: Work flow for localization :: .NET DataSource component :: Improved documentation :: Pivot function for crosstabs :: Continuously variable zoom in the Designer :: Search in preview
- Up to date** :: Gauges :: XHTML/CSS Export :: New HTML object :: Windows7 dialogues :: .NET – Client Profile Support :: Intelligent Mail Barcode

- ➔ **Do you have a current subscription?** All-inclusive for you, you are in the pole position.

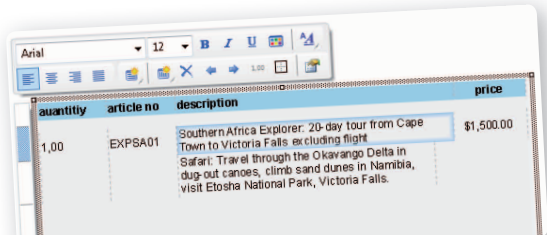
- ➔ **Do you have a Standard Edition?** Order the upgrade now and save **20%** on the upgrade price – the early bird price is valid **until October 27, 2010**. Please contact us to request your individual offer for a subscription.

Planned release date
Oct/Nov 2010



Inplace Text Formatting

Click on the text once and enter, move, delete, format the paragraphs with the mini toolbar or process paragraphs contents without detour. Leaner and meaner with millions of fewer clicks over the long term!



Direct Table Processing

Start the turbo. Click the table once and immediately enter new line definitions, enter new fields; move, delete, format and process field contents. From zero to one hundred in five seconds.

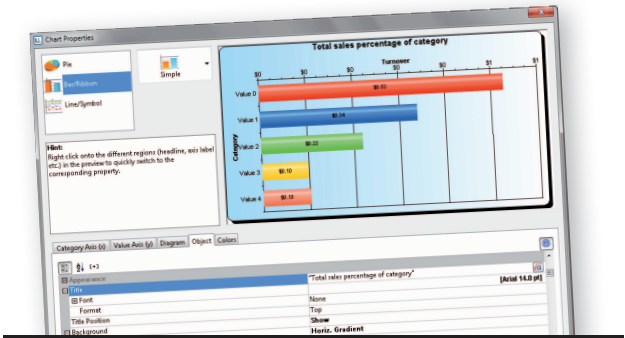
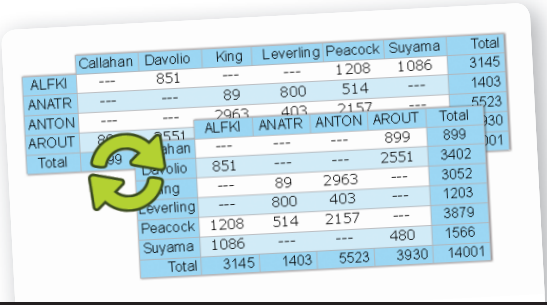


Chart Dialog With Miniature Preview

Even learners will maintain control with navigation in the clickable preview. A click on the background or caption and the properties can be set directly. Never have to ask for directions again!



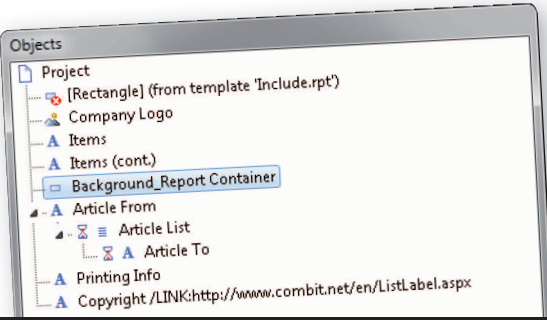
Cross Table With Pivot Function

Lane change with columns and rows does not require a new configuration anymore. A simple option switches rows into columns. And everything is once again in order with the final format and proportions.



Continuous Zoom

Absolute freedom and more fun with zooming instead of only four zoom levels. Now you can simply indicate the area to be more closely examined.



Object List With Object Icons

Scanning not reading! It is now possible with icons for object types. You and the end user understand quickly how things work in a project thanks to clear signals.

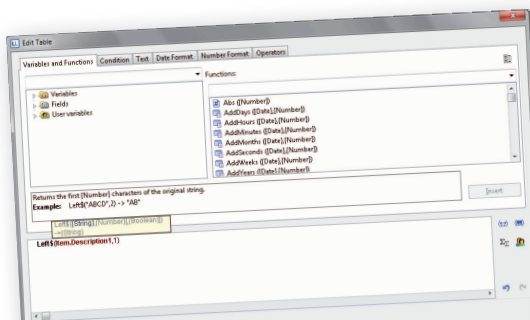


Dashboard!

Gauges

Is there a green light? Anyone can clearly see at first glance how the current values compare to the ideal, minimum and maximum. The new object offers circular and semi-circular gauges similar to speedometers as

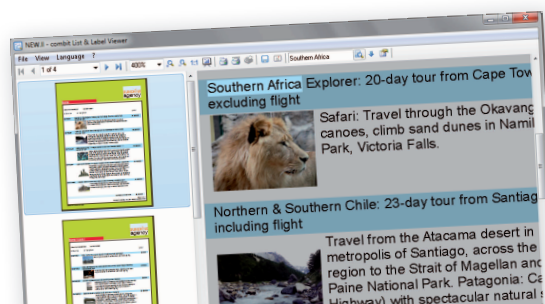
well as scales in vertical and horizontal formats. You have absolute freedom in combining the signal ranges regarding text, dial type, signal ranges, frame, needle style all the way up to the gauge glass.



Improved Intellisense

Reach your goal more quickly using formula wizard.

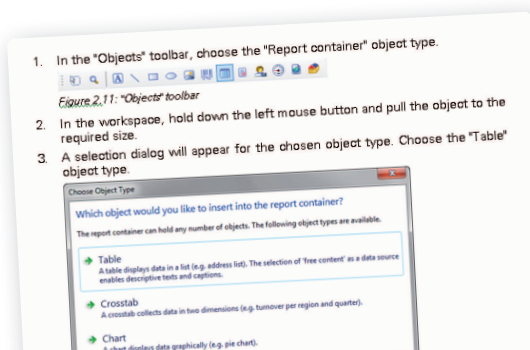
The cursor moves to an appropriate position immediately, when making entries help is provided regarding the current function and new examples take care of any questions.



Preview with Search Function

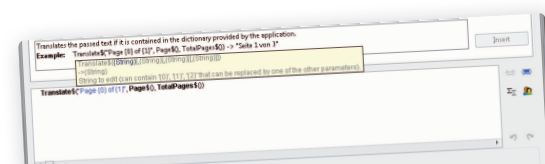
Instant light in darkness with high performance.

"Southern Africa" will not only be found as in this example but also if it should be parked on subsequent pages wrapped and footers, page numbers etc. are in between.



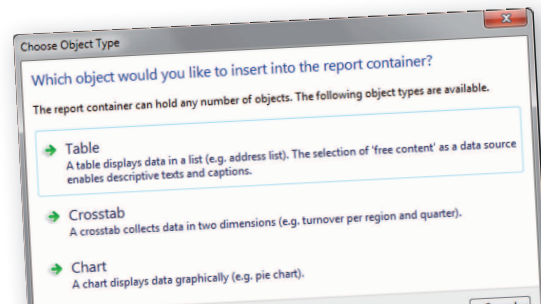
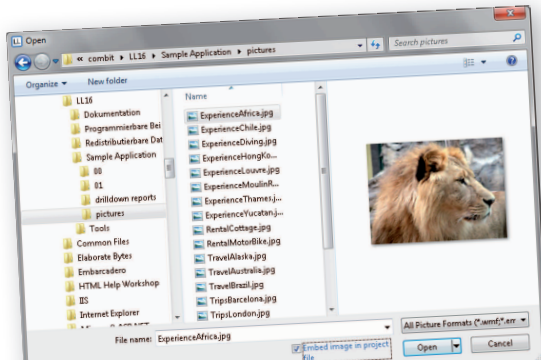
Fine-tuned Documentation

We have completely redesigned the Designer manual with step-by-step instructions with newly structured Programmer's Reference and have also polished the start menu group. Green lights all the way to your destination!



Expanded Localization of Projects

The new API functions let you to transfer fields, variables etc. in many languages to the Designer. The design language can be changed via toolbar icon. Static texts with available translations are offered in the Designer.



Windows 7 Adjustment

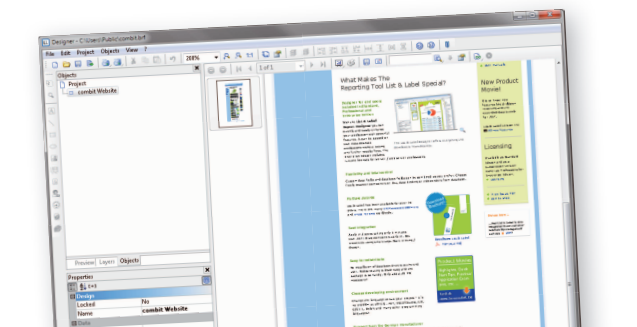
Your application remains in its lane with extensive adjustments to the Windows 7 UX guidelines. Windows common open and and save dialogs also bring favorites, search, breadcrumb lines and the New button which is

new to LL. Another free extra is the options that can be directly set when exporting to one of the available formats. The selection of report container object types and the font dialog now have the new style.



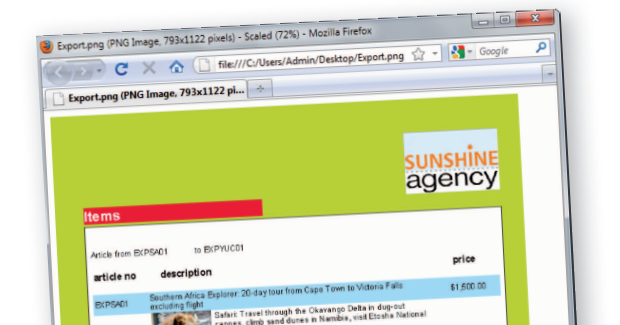
New Export Format: XHTML/CSS

No more dead ends with the export of overlapping objects! In addition current browsers are better utilized with XHTML/CSS. The result is an almost identical copy of the preview, unthinkable up to now!



HTML Object Completely New

Fine tuning creates better performance. In addition the old rendering engine was exchanged for the IE Control in the operating system.



New Export Format: PNG

A good replacement for GIF. PNG as graphic format for raster graphics offers lossless image compression, is less complex than TIFF and is supported by numerous viewers.

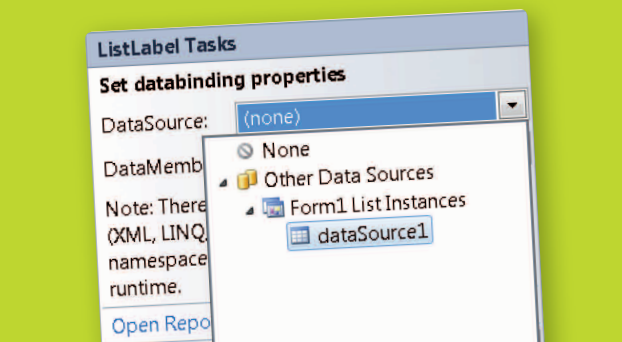
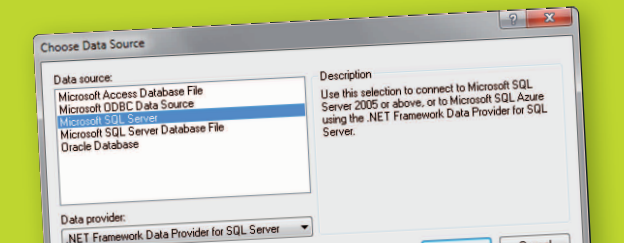


New Barcode: Intelligent Mail (IMB)

And off in the mail. It is mandatory starting in 2011 to assure the lowest prices with the United States Postal Services with highest levels of automation. A lot is bundled in the Multi-Service Barcode.

List & Label 16 News

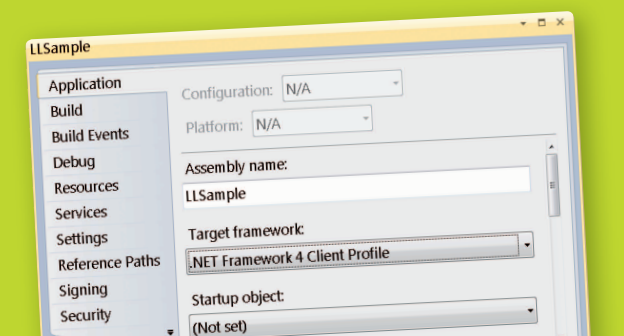
.NET



.NET – New DataSource Component

Not a single line of code! Once again we have made your database access even easier. When you use a DataSource to create the connection to the database, it becomes immediately available in the main component's SmartTag

selection. Start the Designer directly from the development environment using the SmartTag link. It couldn't be any easier! Supports: SQL Server, Oracle, OLE DB, ODBC. The providers already supported in version 15 are available.

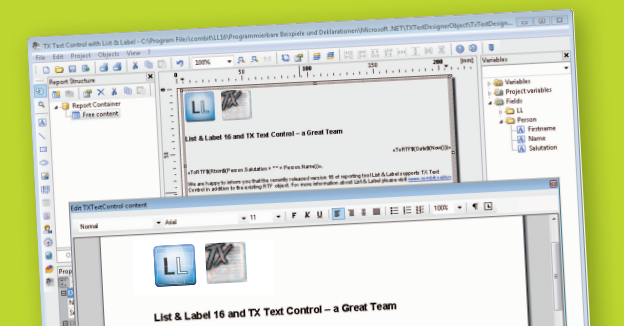


.NET – Client Profile Support

Leaner distribution. Since Visual Studio 2010, the Client Profile is the standard target framework for .NET client applications, making it even easier to distribute the .NET framework. Now you can also target the Client Profile.

.NET – Tutorial

Faster on the starting line. The new Programmer's Reference offers tips and tricks specially tailored to the needs of .NET developers for the use of List & Label with C# and VB.NET.



.NET – Integration of TX Text Control

Supplements current RTF-Object. You can now print user objects on multiple pages. One example is already on board; the integration of TX Text Control .NET version 15.1 (at least Professional) and up.

.NET – Localizing Projects

The localization of projects when using one of the components is now completely streamlined, especially for .NET. Get the green light for international projects!

List & Label 16 News

Further New Features in V16

Snap to ... :: When adding and moving objects, they snap to one another and are thus simple to align :: Table separators have improved snap characteristics, even when using multiple tables.

Adjust columns proportionately :: Should you adjust the width of a table using the activated Ctrl key, the column widths will automatically adjust so that their proportion to one another remains the same.

Multi-selection :: Select several objects in the Designer and they will receive a common as well as an individual frame. You can immediately see what was chosen.

Evaluation sequence of user variables :: Can now be freely determined and not merely alphabetically according to name as was previously the case.

Presentation :: In the printing options you will be offered the presentation mode directly as printing target.

New Designer Functions

GetVal/SetVal :: Allows values to be buffered and then used again, e.g. when repeating a sub-total on the following page or in a group footer referring to information in the previous group footer.

RegexSubst\$:: It can be used to search and replace with regular expressions - a truly expert feature.

LangCase\$:: Supports localization.

StartsWith/EndsWith :: You can use these string functions to test, whether a string begins or ends with a certain string.

Page and Page\$:: Allow the entry of an offset, so a title page or table of contents can be easily integrated in the page numbering.

IsNullOrEmpty :: It allows you to simultaneously, simply and quickly test if a string is Null or empty.

Important to know

➔ **Planned release date** **Oct/Nov 2010**

➔ **As a subscriber with an active Professional or Enterprise Edition** you already have V16 inclusive. Everything is paid for and done. You will receive automatic information about the download or the delivery of a CD: Please register the previous version if you have not done so already!

➔ **As a customer with any other List & Label license, except the Free Edition**

... take advantage of the **Early Bird Price until October 27, 2010** for the Standard Edition 16 and save **20%** off the regular upgrade price.

... or ask us for an **individual offer** for the change or about reentering a **subscription**.

➔ You will receive the **Standard Edition 16** for free by download, if you purchase the Standard Edition 15 after September 15, 2010 and register it by November 30, 2010.

Place your order now!

Subscribers Already Had it in V15

RTF-Export :: The picture format can be selected via the Picture.Format option for the RTF export.

.NET :: Object data provider can work with empty untyped enumerations :: In label projects copies are supported.

Chart :: Improved scaling for time differences.

Designer :: The precise error location for syntax errors is provided in a dialog.

Order

Fastest in the shop: www.combit.net/us/shop

Questions

We are happy to help! Simply give us a call
Tel. +49 (0) 7531 90 60 10 or send us an e-mail at sales@combit.net

More information, screenshots in original size and a product movie about new features can be found before the release date at www.combit.net/en. If you are registered with our InfoService, you will be notified automatically. Order the eMail-InfoService free of charge now: www.combit.net/en/infoservice

© **combit GmbH 2010**, subject to changes and possible errors! This content is only a description and does not represent a guarantee for the quality of the product. Please note that with the third-party product versions that are mentioned, different releases may occur that include other functions. We therefore recommend trying out our free of charge test version in order to avoid any possible problems in advance. All named products and product descriptions as well as logos are brands, are registered trademarks or the property of their respective owners.