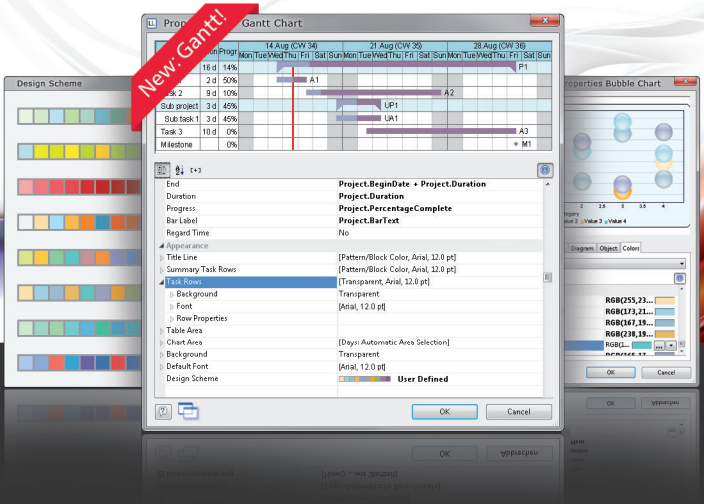


The Next Generation:

List & Label 17



Top Features



Designer: Gantt chart, automatic table of contents, PDF object, Designer as control, data graphics, new chart types ...



Web: Integration in MS SharePoint, optimized XHTML export, new data sources, Firefox/Chrome/Opera/Safari viewer plugin ...



.NET: Your own Designer objects with genuine properties, RTF editor object with events, optimized Crystal Reports converter ...



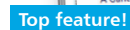
How can I get LL17? On the reverse you will find important information on subscriptions and

Early Bird Offers!

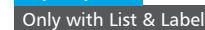
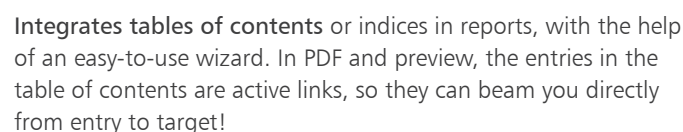
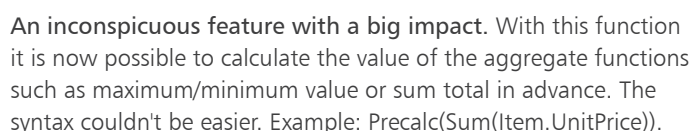
"List & Label 17 is way better: There is a lot of innovation to discover, not only in the area of the Designer, but also for web applications and .NET."
Jochen Bartlau, Project Manager



Find out more about these and other innovations, and launch your application into new Designer galaxies!



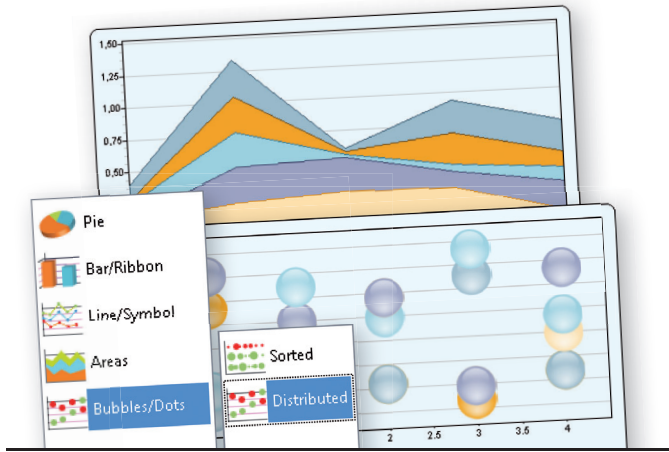
Create timelines at the speed of light. The new star in the report container shows actions in their temporal context, whether for a vacation schedule or a machine maintenance plan. And the adjustment options are superb – design schemes support, end points, selection of time unit, bar types, etc., including hotspot preview.



Optimized processing of forms in the endless universe of administrative bodies. No more inconvenient recreating or scanning in large amounts of data – simply deposit the PDF, place text fields, and you're done!

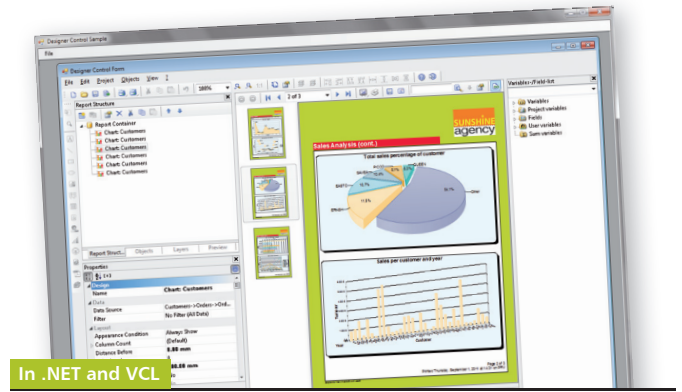


Visualize data quickly and easily. As in Excel, stripes, stars, checkmarks, etc. can be defined for a value range and then displayed depending on the actual value. This is great in combination with the new Precalc function.



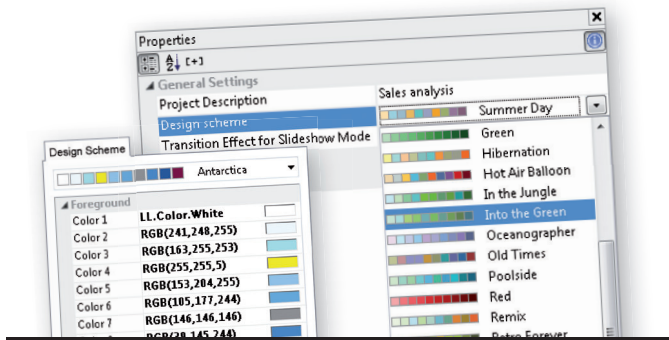
New Chart Types: Area and Bubble

Four dimensional reporting is available with the new bubble charts. The position in x/y orientation and the color and size of the bubbles result from the data. This can really make your head spin! Area charts are a striking alternative to stacked line charts.



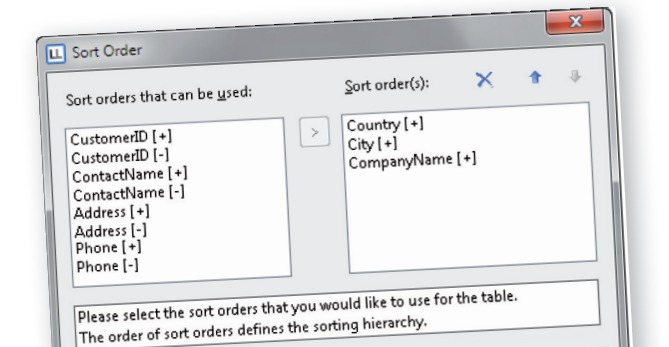
Designer as Control

Smooth integration: the Designer can now be hosted in a control (.NET/VCL). The age of modal windows is gone. Enjoy seamless, more flexible integration of the Designer into your own application.



Design Schemes

Charts, crosstabs, tables, etc. are displayed in just the right colors due to the quick and easy color schemes. You can use the color schemes provided or define your own in line with your corporate design.



Multi-level Sorting

No more limits on sorting! Now any number of levels is available, meaning that you can sort first by solar system, and then by planet (within the system), including automatic support by the data binding components.

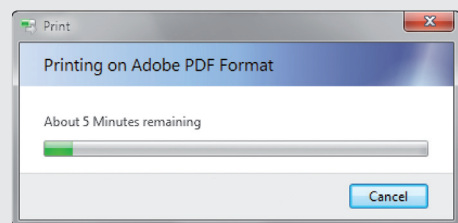
etc.

New Designer Functions

- :: ChangeLightness() for color brightness adjustment
- :: ReportSectionID\$() for finding the location within the index/table of contents (for conditions, etc.)
- :: Roman\$() for Roman numerals

Other Improvements to the Designer

- :: Table lines can be fixed together
- :: Mini toolbars can be optionally suppressed
- :: Progress dialogs are in the current Windows 7 style, including time estimate

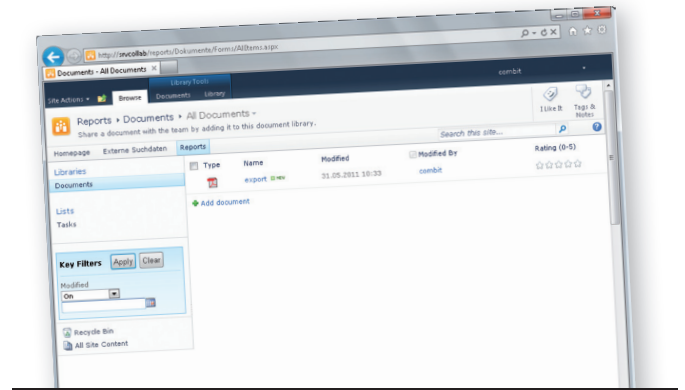


- :: Copy/paste is now available in the layer dialog
- :: User and sum variables can be edited from the variable/field list with a double-click and context menu
- :: For label projects, only a "base" level is created as standard
- :: Context menu in the report container facilitates the creation of new elements, copying, pasting etc., plus the use of new design schemes
- :: The ergonomics of the formula wizard have been improved. Pressing "enter" no longer closes the dialog, but instead adds a line break

Web

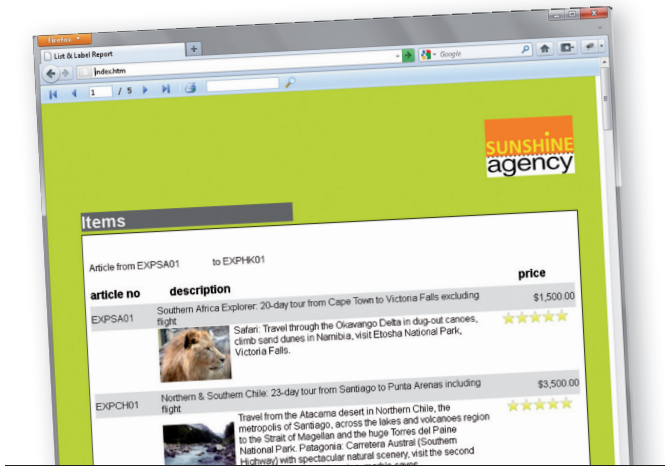
The second focus of List & Label 17 is on features that give your cloud, intranet and web applications a burst of energy. With SharePoint integration, various brand-new viewer plugins and improved XHTML exporting, your application jumps into hyperspace on the Internet. With .NET you can also use data providers for JSON, CouchDb and MongoDB.

Discover the latest web features in List & Label and make your application weightless in the world wide web.



MS SharePoint Integration

Direct exporting to MS SharePoint is now supported by the .NET component with an extension assembly. Using the collaboration platform, users can work on documents, etc. at the same time.



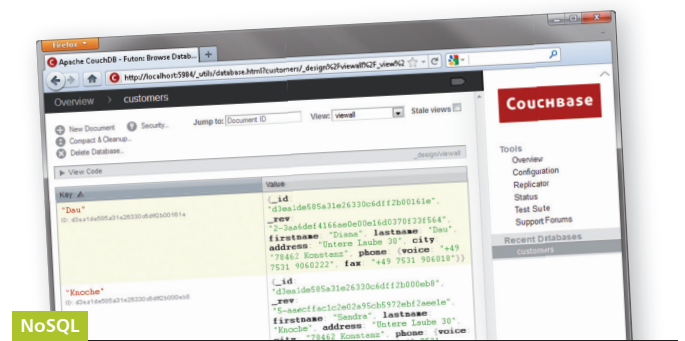
Improved XHTML Export

The new generation of XHTML export scores points with new stylesheet features – you can print from the browser and maintain the layout. The convenient toolbar supports different styles and lets you navigate through the XHTML result.



New Viewer Plugins: Firefox, Chrome, etc.

Web applications turn into high flyers. With the new plugins for Firefox, Google Chrome, Safari and Opera, end customers can create PDFs with List & Label in Windows from the browser, work with drilldown reports and print.



Data Sources: JSON, CouchDb, MongoDB

With new providers, the .NET component can be connected to popular Internet data sources – data from JSON (Java Script Object Notation) and the two "NoSQL" databases CouchDb and MongoDB can now be reported with List & Label.

The advantage of "NoSQL" databases is that they don't need a fixed schema and thus scale much better. For this reason, "NoSQL" databases are behind large websites like eBay and Facebook.

etc.

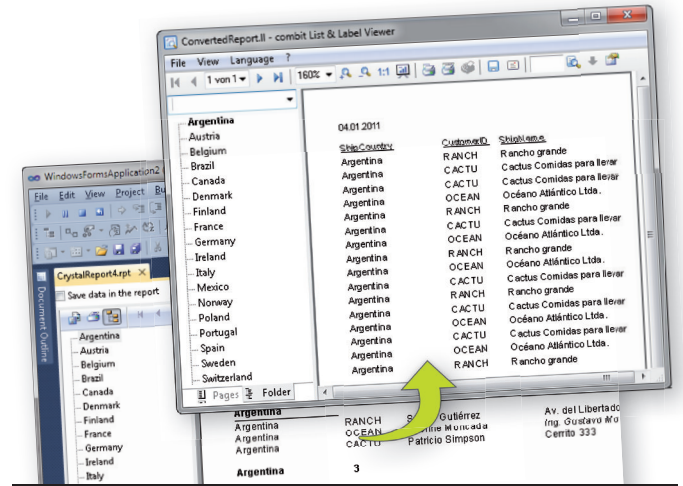
Additional Web Features

- :: The "export" method in the .NET component makes the creation of silent reports (i.e. without user interaction) easier.
- :: HTML exporters (HTML/MHTML/XHTML) now write UTF8 files instead of UTF16. This usually reduces the output size by half and increases the loading performance of web applications.

.NET

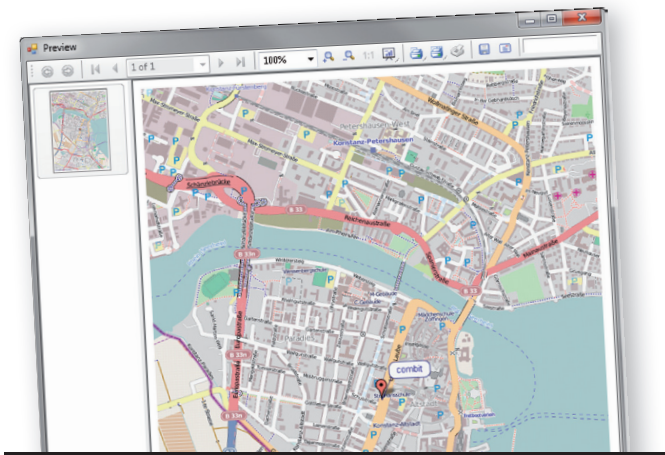
In .NET too your application remains future-proof with the new List & Label features. In the popular software platform, you can now add your own Designer objects with full properties. This allows a brand-new perspective for your development. In addition the RTF editor object and Crystal Reports Converter are presented with a total redesign.

Find out how these and other LL17 .NET features will contribute to the success of your application.



Crystal Reports Converter

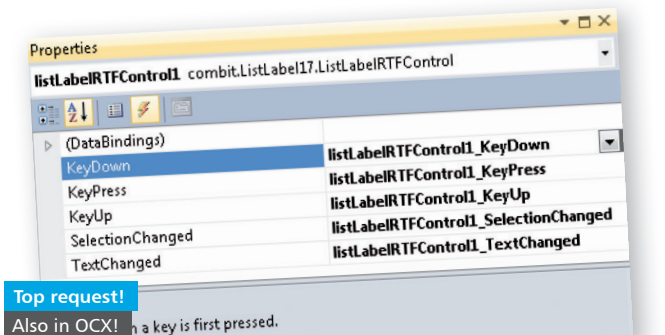
The new converter for report generator switchers beams the content of your Crystal Reports report to List & Label. Individually adaptable by means of the accompanying source code. The standard areas, groupings, and much more are migrated.



© OpenStreetMap and contributors, CC-BY-SA

Individual Designer Objects

Your own objects now appear in the Designer with the full range of properties. The example in List & Label source code shows the connection to Bing maps, OpenStreetMap and other map service providers, including geocoding.



RTF Editor Object With Events

The RTF editor object may advance from developer's darling to List & Label star with this innovation. For .NET we have added some new events and methods for the object that make utilization more versatile.

Additional .NET Features

Performance Boost

- :: 50-80% faster printing from Designer, including with large databases.
- :: The "UseHardwareCopiesForLabels" property forces the use of hardware copies in the .NET component, resulting in a speed advantage.
- :: With the event "LoadDeferredContent" in the object data provider, content is only loaded for printing on request, which provides a significant increase in performance.

etc.

- :: The "Export" method simplifies output to PDF, XHTML, XLSX, etc.
- :: Data providers support multi-level sorting
- :: ViewerButtonClicked and ViewerButtonState EventArgs now with LViewerAction parameters
- :: WPF viewer control supports the PageDown and PageUp buttons for browsing

Not .NET but Brilliant Anyway!

Modernized Excel Export

- :: Now available in 64 bit
- :: Writes XLSX files (current Office XML format)
- :: Improved compatibility and performance

64 Bit Support, etc.

- :: 64 bit support via Embarcadero RAD Studio XE2 in Delphi applications
- :: RTF export: images are embedded as JPG (previously BMP), resulting in shorter load times and faster posting by e-mail.

LL17 Pioneers

Jochen Bartlau, combit

Project Manager List & Label



What is your favorite feature in Version 17, and why?

I really like the Gantt chart. It fulfills a long-standing customer request and allowed us to close a gap for which there was previously no reasonable workaround. Closing

this gap was of great importance to the entire team.

Which features will be useful for most customers?

If you think of "customers" as "endusers", the individual Designer objects with the full benefit of real properties have the greatest potential. Developers can write significantly more powerful objects and no longer have to worry about all the handling. On the other hand, the end users also benefit from better integration of self-written objects – the handling is more consistent.

Why are there so many Designer and web features this time?

The advantage of Designer features is that our customers can benefit from them immediately without having to modify the application. Since we incorporated API-heavy features in earlier versions, we can now implement the features that were made possible as a result.

The web is – apart from buzzwords like "cloud" and "SaaS" – an increasingly important market, not only for us but also for our customers. It was therefore only logical to focus on this area.

Which feature is the secret star?

The Precalc() designer function, which allows precalculations. A lot of interesting things can be done with it; in addition, the gauges introduced in the last version are significantly revalued, since you don't have to "know" the reference value for the scale – now you can calculate it.

What was the biggest challenge for you?

The automatic implementation of the table of contents and index was exciting – above all because the preview is initially created without this area. Then, they are automatically created in a background thread which updates the preview on the fly once it's done.

Bernhard Ponemayr, Comtech

Alpha Tester List & Label 17



What was your first impression of List & Label 17?

LL is once again more powerful than in the previous version. I really like the precalc function and the Gantt chart.

Is the upgrade worth it?

The many new functions and other refinements justify an upgrade.

Lutz Conrad, Conrad & Partner

Alpha Tester List & Label 17



What was your first impression of List & Label 17?

It is amazing what combit has once again created in order to expand an excellent product with new features.

Which features do you like best?

The Gantt chart is awesome! I haven't discovered any instabilities or conspicuous errors so far. All the existing reports that were tested still run properly.

Is the upgrade worth it?

I would strongly recommend that every professional developer installs the new version.

Hans Bärffuss, PDF Tools

Alpha Tester List & Label 17



Which features do you like best?

The PDF object is especially helpful. With it you can insert templates as PDF files directly into the Designer.

Is the upgrade worth it?

Absolutely! The PDF object is a great way to make work much easier, because it also works for multipage PDF files.



100% recycled,
printed with
eco-friendly ink.



Your Version 17!

Subscribers

With an active Professional or Enterprise Edition you already have LL17 included – and you are all set. You'll receive information about the download. If you have already registered your previous version, your update will already be registered and ready to collect. Otherwise, please register the previous version.

Customers With Other List & Label Licenses, Except the Free Edition

You can save 20% up to Oct. 25, 2011

- :: on the regular update price for Standard Edition 17
- :: on the regular first year's price for an upgrade to a Professional or Enterprise Edition – also applies to restarting a subscription

New Customers

You will receive Standard Edition 17 as a download free of charge if you purchase Standard Edition 16 after Sep. 15, 2011 and register it by Nov. 30, 2011.



Release expected Oct./Nov. 2011

Early bird offer only valid until Oct. 25, 2011

Place your order now!



www.combit.net/us/shop



sales@combit.net



tel. +49 (0) 7531 90 60 10

© **combit GmbH 2011**, subject to changes and possible errors! This content is only a description and does not represent a guarantee for the quality of the product. Please note that with the third-party product versions that are mentioned, different releases may occur that include other functions. We therefore recommend trying out our free of charge test version in order to avoid any possible problems in advance. All named products and product descriptions as well as logos are brands, are registered trademarks or the property of their respective owners.

combit GmbH
Untere Laube 30
78462 Constance
Germany

Sales & Service Team
tel. +49 (0) 7531 90 60 10
fax +49 (0) 7531 90 60 18
sales@combit.net

combit.net