

Reporting redefined:

List & Label 19



Top LL19 Highlights

Interactive reports: report parameters, expandable regions, collection variables, interactive sorting in the preview, etc.

Charts: shapefile, donut, funnel, and pipeline charts, geovisualization, automatic lines of best fit, etc.

Up-to-date: Visual Studio 2013, Windows 8.1, SharePoint 2013, high-DPI-support; .NET: REST, OData, revised ObjectDataProvider, etc.



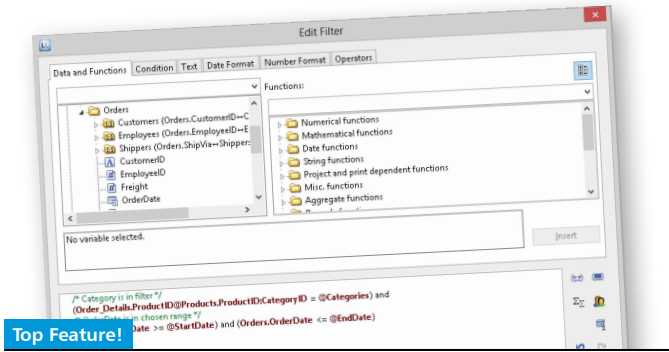
How can I get LL19? On the back you will find important information on subscriptions and our

Early Bird Offer!

Interactive Reports

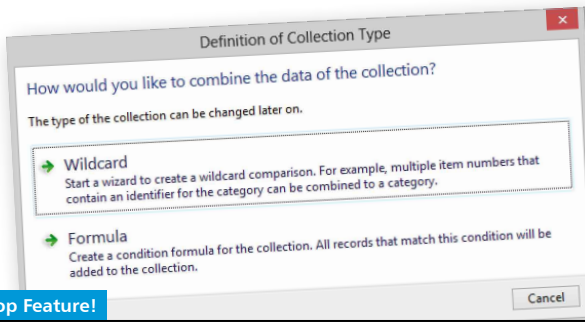
List & Label 19 offers a host of new features, making reports even more comprehensive, and offering end users richer and more intuitive functionality, where supported by your application.

Report parameters (limited to one per report in the Standard Edition) enable you to easily filter the information displayed in your report. Expandable regions in the preview provide hassle-free drill-down functionality, allowing you to home in on precisely the data you require. Collection variables let you group data according to your needs. Plus, you can now add a sorting function to headings in tables – meaning you can sort regular lists in the preview, and transform them into a powerful information tool.



Report parameters

Report parameters can be used in formulas like any other variables. The example above shows how you can deploy report parameters to filter data. And because report parameters are defined in the Designer, end users benefit too.



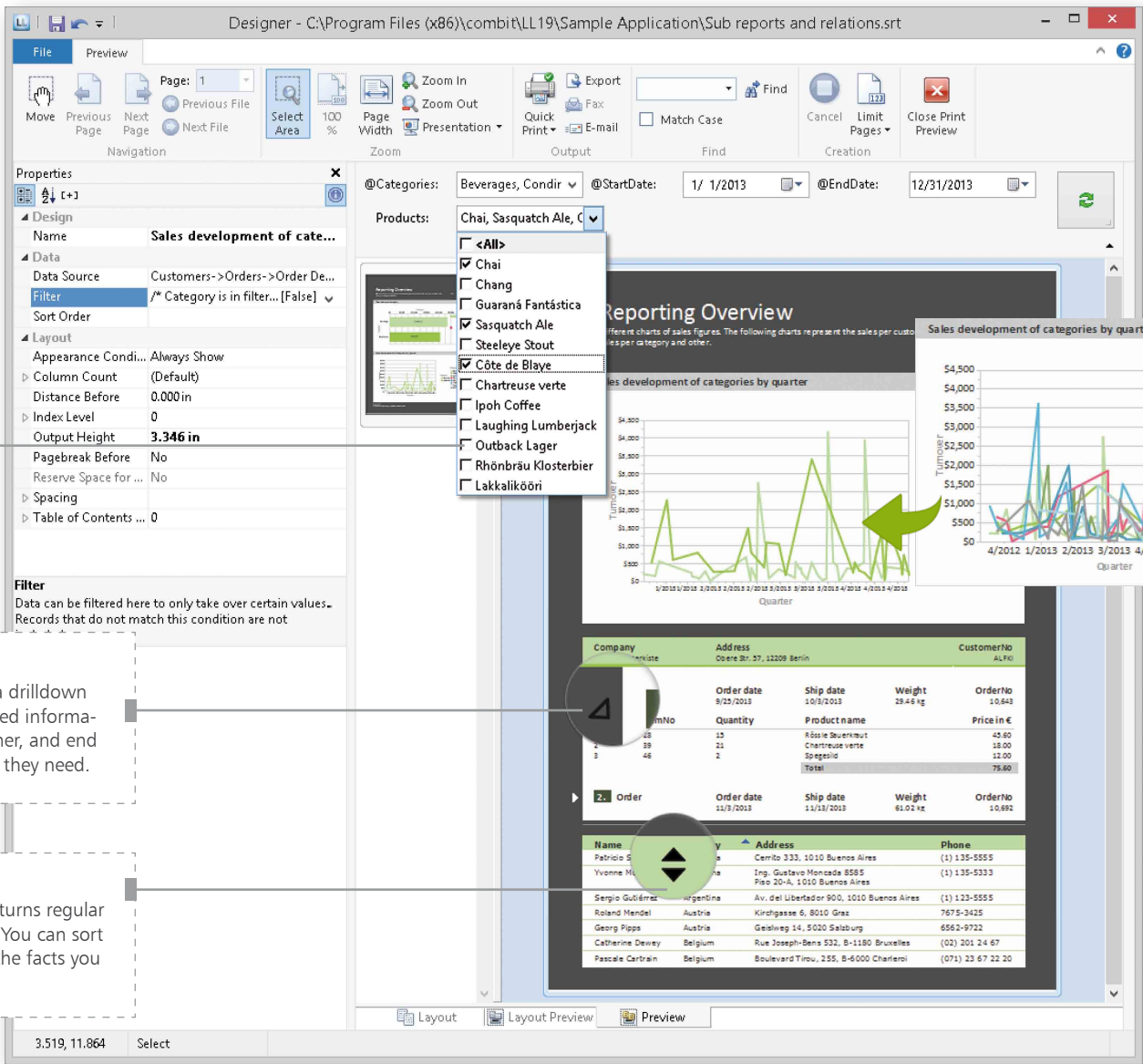
Collection variables

Collection variables enable you to easily categorize data. For example, you can assign a specific color to collected data. This additional information is then available for chart colors, labels for crosstabs and more in the Designer.

Dependent parameters
You can set report parameters to be dependent on each other. In the example shown here, if you select beverages as the first parameter, you can only choose from corresponding options for the second parameter.

Expandable regions
The expandable regions in the preview offer a drilldown function, providing users with clearly structured information. Simply activate the regions in the Designer, and end users will be able to “zoom in” on the details they need.

Interactive sorting
The interactive sorting feature in the preview turns regular lists into comprehensive information records. You can sort data according to your needs to quickly find the facts you require, all in a single report.



Report parameters
Reports can quickly become cluttered if you are using data from multiple sources. Report parameters enable end users to select specific values in the preview. This way, they can define which information should be displayed.

“ The new features for report generation are fantastic! There’s something for everyone. Report parameters are my personal favorite.

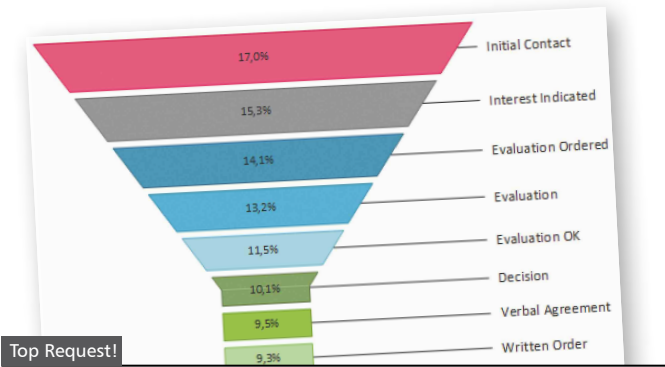


Managing Director and Head of Development
List & Label

Charts

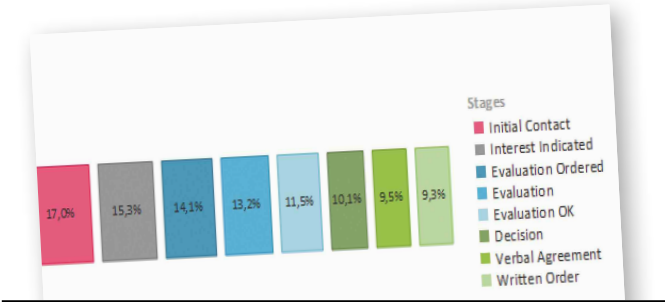
Charts make sense of your data. Rather than wading through a mass of data, you can answer all your questions at a single glance. In which quarter were revenues highest? Which customer has needed the most support? Or on a more technical level: what time of day is the server load at its highest?

One key highlight in version 19 are shapefiles, which enable geo-visualization and more. Users can display their data in even more ways, with the new funnel, pipeline, and donut charts. Plus, they can combine line and bar charts, and automatically generate lines of best fit and average lines.



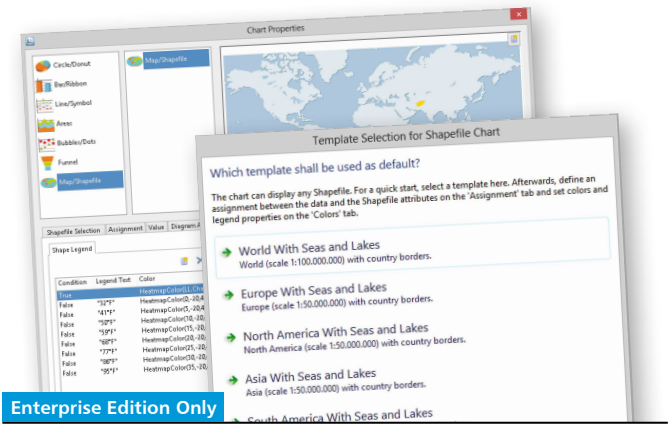
Funnel chart

Funnel charts are used to visualize any process that involves a reduction in numbers over time. For example, they can depict the gradual transition from an initial group of leads to the final number of customers.



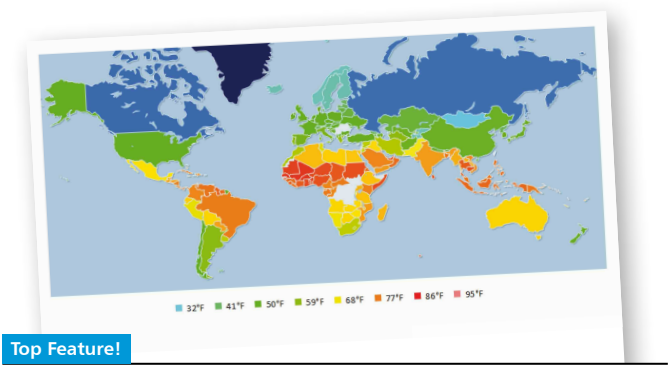
Pipeline chart

Pipeline charts show what's "in the pipeline" – an ideal addition to dashboards in business intelligence programs. They provide an easy-to-understand overview, making them perfect for production processes.



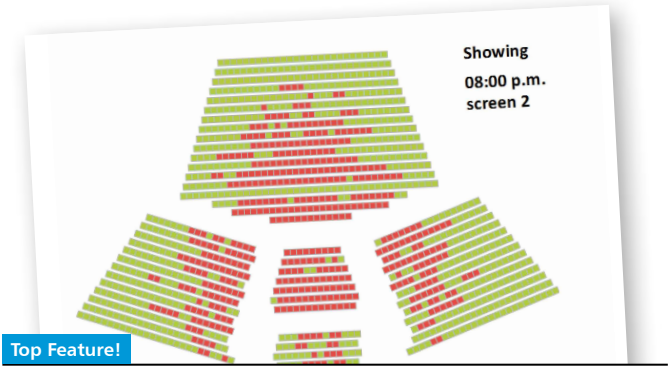
Shapefile

Shapefile is a new chart type exclusive to the Enterprise edition. A range of shapefile templates for the earth and continents is included, and many more are available online, allowing you to create a diverse range of charts.



Geovisualization

Shapefiles are perfect for presenting information on maps, such as the distribution of customers in individual countries, and for creating color-coded diagrams of revenue per country.



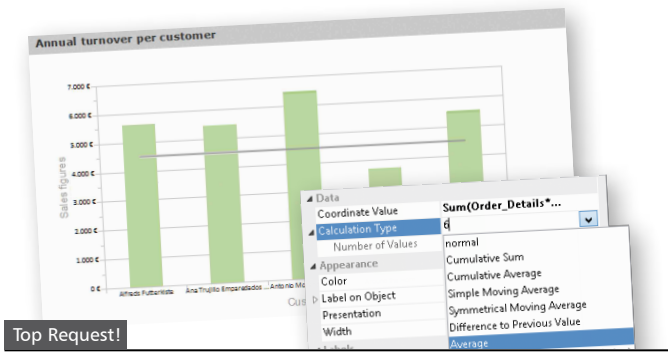
Your own shapefiles

You can create your own shapefiles using CAD software – for example, to create floor plans and visualize event rooms and bookings etc.



Donut chart

You can vary your diagram style and give your report a fresh look by adding a simple, modern donut chart in 2D or 3D. And as always with List & Label, everything can be tailored in line with your needs.



Combined charts

List & Label 19's combination charts are an easy way of displaying totals, averages, and average lines on bar charts – making it easy to integrate lines of best fit and recognize trends.

More

New type of perspective

"Flat" projection is an attractive new way of displaying 3D charts without distorting the perspective.

Stacked charts

You can define the minimum part of your data (a handy feature for small values), and modify your chart's labels using a new variable.

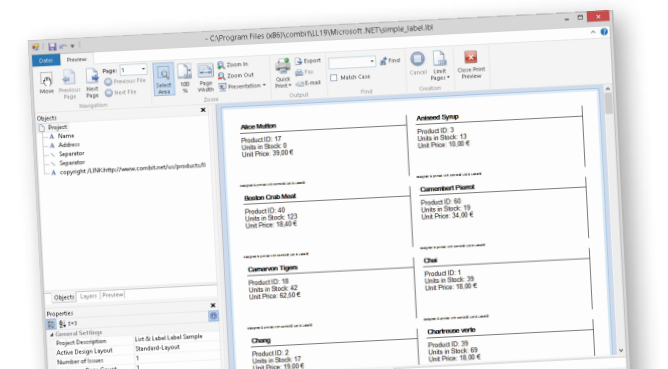
Legends with fixed widths

Fixed-width legends enable better comparisons when several charts are overlaid.

.NET

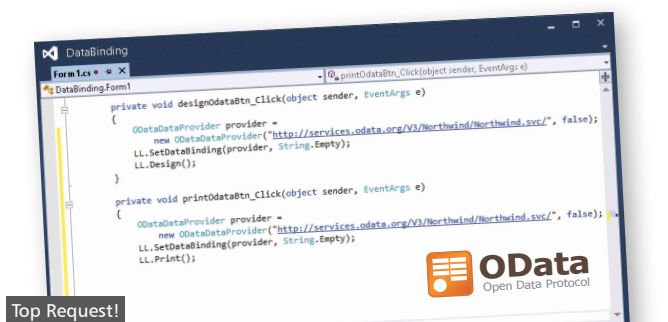
LL19 offers exciting new options for .NET and web developers. The new data provider – OData – enables simple web querying of entire databases. REST API allows you to hook your application up to CMS systems, feeds, and other data sources with just a few lines of code. Additionally you can sort your label projects when using data providers.

As one of a select group of international Microsoft SimShip partners, we were involved in every stage of beta testing for Visual Studio 2013. This meant we could ensure from an early stage that LL19 fully supports the new dev environment.



Sorting for label projects

If you are using a data provider as your data source, you can change the order of data in your label projects via sorting – allowing end users to print labels in whatever order they wish. And with a few minor adjustments, you can also use this feature when working with programming languages other than .NET.



OData data provider

OData is a web protocol for querying databases. For example, it enables you to easily integrate data from Microsoft® Visual Light-Switch® into your applications. This data can be configured as an OData server with mouse-click simplicity.

XML



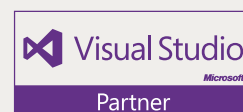
REST data provider

REST is the query language of choice for many CMS systems, web applications and web-based database solutions. The new data provider enables you to integrate data from these sources into List & Label.

Other

Visual Studio 2013

LL19 works seamlessly with Visual Studio – and this remains the case for the 2013 release, too.



Higher-resolution displays

In addition to standard-resolution screens, LL19 now supports displays with a high DPI value – as can be found in the latest tablets. This means you can label your application DPI-aware, and ensure that text does not appear blurred or navigation elements too small on these devices.

Windows 8.1

List & Label 19 will support Windows 8.1.

SVG export

The new Scalable Vector Graphics (SVG) export format can be displayed in any HTML5-compatible browser.

Data providers

Object and JSON data providers now offer a less complicated view on hierarchical data, enabling a greater range of comprehensive design options for complex object structures.

Viewer supports ribbon

A ribbon is now available for the viewer, too, providing users with the same functionality as in the preview.

It's official: Bug Fixing Promise



Jochen Bartlau, combit

Managing Director and Head of Development List & Label



Jochen, how do you plan to handle bugs in LL19?

List & Label is famous for its reliability – but with software so complex, there's always a chance that a bug will slip in. At combit, we fix bugs exceptionally quickly, and that's something we're proud of. Now we want to make it official: starting from version 19, we are making a commitment to our customers on bug fixing. This will provide Enterprise customers with greater peace of mind.

So we're talking about a bug-fixing policy?

We promise to fix all serious bugs within 14 days from the time we reproduce the error. That means we provide the customer with a test DLL. A bug is defined as serious if it reduces functionality, there is no workaround for it, and thus prevents a key feature of List & Label from being used.

And what happens if you can't fix the bug within the guaranteed time?

That's something I'm not too worried about. According to our statistics, this happens very rarely. As a result, for each day longer that we need, we take ten euros off the cost of the customer's license for the next year. Per customer and year, we pay up to a maximum of the cost of an extension to one subscription.

Sounds good to me! But why bother to make a promise that's so easy to keep?

I wouldn't say it's easy. The combit support team isn't your standard external call center. It is made up of skilled experts. And in tricky cases, we are quick to involve the development team. I can't think of any other software vendor that has such a close relationship with its customers. That's confirmed by the feedback received by the support team: our latest survey reveals that 97 percent of customers are satisfied or highly satisfied with List & Label – and support staff plays a key role in that. I'm sure that the combit team will be able to keep this promise.

What is the most important new feature in LL19, in your opinion?

List & Label 19 enables you to create even more powerful, comprehensive and interactive reports. My personal favorite feature are the report parameters. The report includes several scenarios, and users can filter the data they require. The parameters can be changed in the preview without modifying the code. This makes life easier for developers, because the users generating the report can make the changes themselves. Plus, you can set parameters to be dependent on each other, and you can use them in formulas. The possibilities are endless! The collection variables are another favorite of mine. They enable you to collect data of the same type and represent it in a uniform way. And you can use them in formulas, too.

And what's new with the other report features?

The preview is now more streamlined. You can define expandable regions so that the first thing the end user sees is a summary – for example, all the orders placed by a particular customer. The user can then expand an order to find more detailed information. This is an easy-to-use drilldown function. You can also organize lists more clearly by enabling sorting for header fields, allowing users to sort their lists according to their needs, and turn a regular overview of customers into easy-to-browse information.

I hear there have been some changes to the charts too.

Exactly. I have a favorite chart too – the new shapefile, used to display data in the form of a map, for example. I love that you can use CAD software to generate your own shapefiles, to visualize seating plans and reservations and more. On the more technical side, you can take an exploded view drawing of a product, and use colors to show the stock levels of individual parts, the delivery times, and the costs – it's great!

And what other new chart types are available?

Funnel, pipeline, and donut charts are just a few of the fresh new options for reports. Moreover, List & Label automatically generates lines of best fit for bar charts, enabling users to easily compare data to the average and recognize overall trends.



100% recycled,
printed with
eco-friendly ink.



Your Version 19

Subscribers

With an active Professional or Enterprise Edition you already have LL19 included – and you are all set. You'll receive information on the download. If you have already registered your previous version, your update will already be registered and ready to collect. Otherwise, please register the previous version.

Customers with other List & Label licenses

You can save 20% up to Oct. 23, 2013

- :: on the regular update price for the Standard Edition 19
- :: on the regular first year's price for an upgrade to a Professional or Enterprise Edition – also applies to restarting a subscription

New customers

You will receive the Standard Edition 19 as a download free of charge if you purchase the Standard Edition 18 after Sept. 11, 2013 and register it by Nov. 30, 2013.



Release expected Oct./Nov. 2013

Early bird offer only valid until Oct. 23, 2013

Place your order now!



www.combit.com/shop



sales@combit.com



tel. +49 (0) 7531 90 60 10 or

+1 800 256 3608 (toll-free in the US)

© **combit GmbH 2013**, subject to changes and possible errors! This content is only a description and does not represent a guarantee for the quality of the product. Please note that with the third-party product versions that are mentioned, different releases may occur that include other functions. We therefore recommend trying out our free of charge test version in order to avoid any possible problems in advance. All named products and product descriptions as well as logos are brands, registered trademarks or the property of their respective owners.

combit GmbH
Untere Laube 30
78462 Constance
Germany

Sales & Service Team
tel. +49 (0) 7531 90 60 10
fax +49 (0) 7531 90 60 19
sales@combit.com

combit.com