

Effective Background Support

List & Label 24



LL24 Highlights

Designer and Preview

Crosstabs via drag & drop, find and replace, converting crosstabs to charts and vice versa, customized preview (.NET/VCL), embedded export formats, ...

Web & .NET

Parametrized data sources, HTML5 Viewer: SVG and drill-down for charts, custom Web Designer objects/functions, Web Assembly for .NET Standard,...

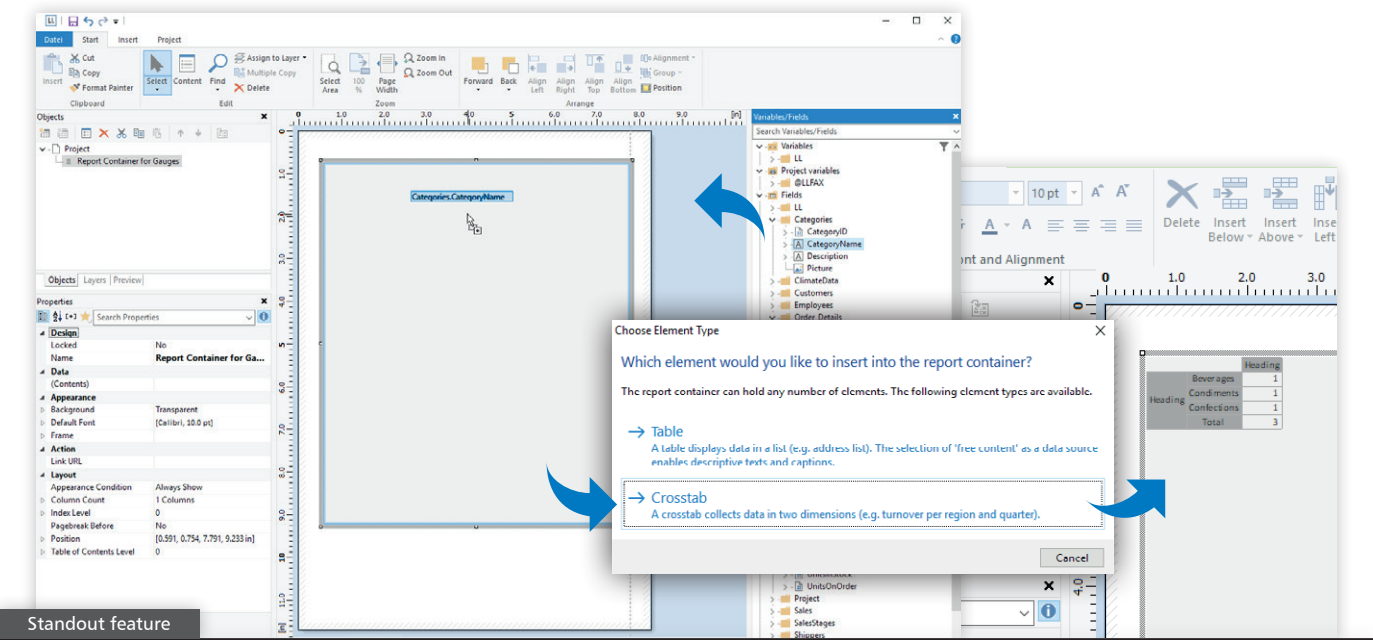
Report Server

Native apps for iOS and Android, new actions for scheduled reports, requested features in the Ad-hoc Designer, ...

Other New Features

Enhanced performance, Rscript for additional charts, animations for XHTML export, extended PDF/A support, ...

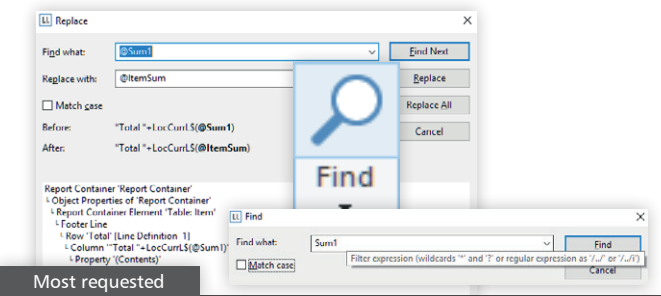
Designer and Preview ...



Creating a Crosstab via Drag and Drop

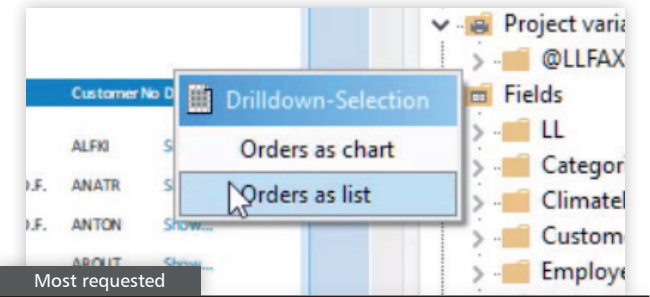
You can now create both tables and crosstabs simply by dragging fields to your workspace. This is a very intuitive way to

build a basic crosstab that you can edit later. This way, you start quickly and enhance the crosstab step by step.



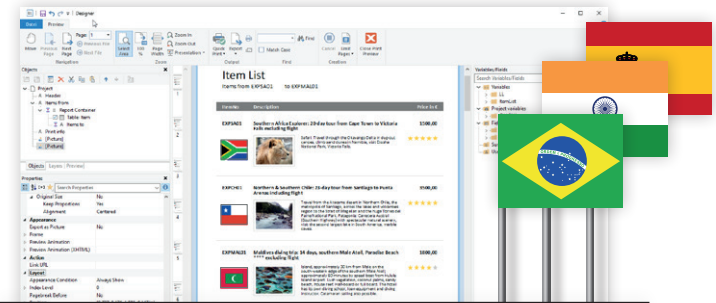
Find and Replace

The Designer now provides a powerful find and replace function. It lets you quickly and easily update reports to reflect changes to the names of fields, tables, variables, etc.



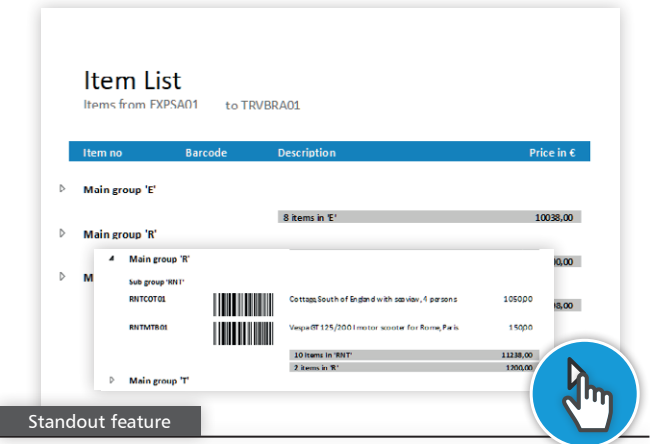
Seamless Refresh for Preview

E.g. for drilldown and other interactive preview features, the preview is now seamlessly refreshed when new content has been generated.



Country Flags

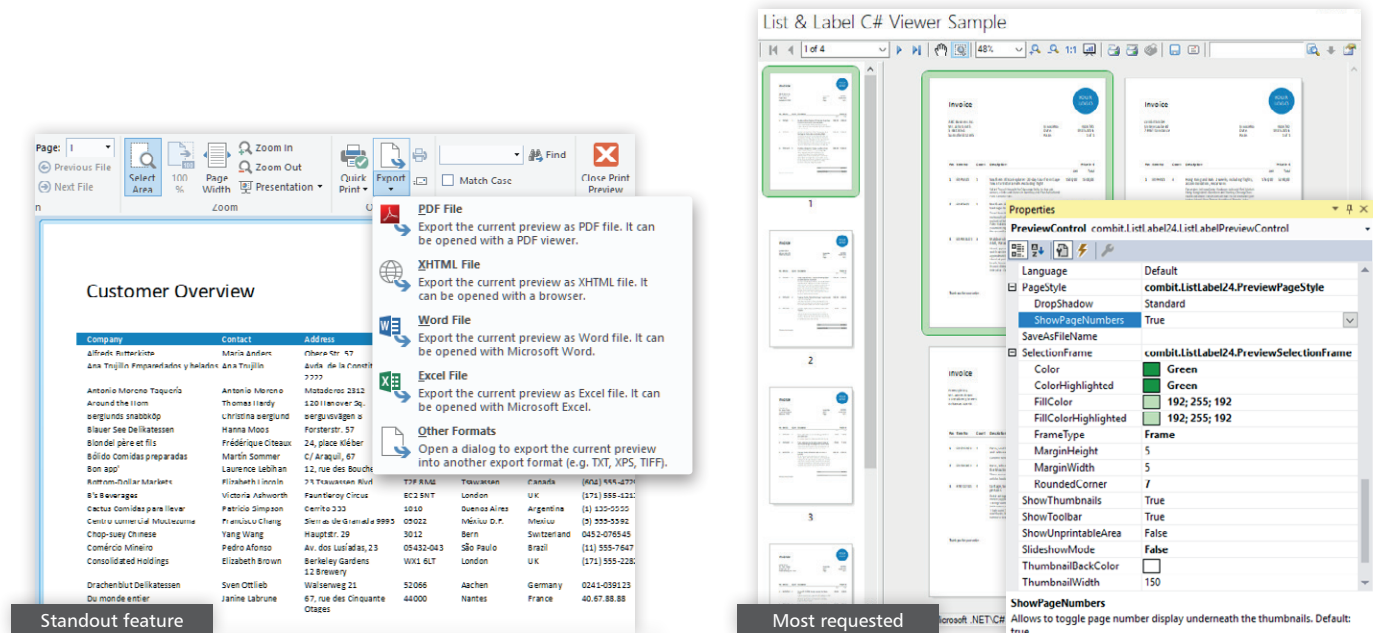
The new CountryFlag function enables you to create an SVG graphic of the required country flag anywhere in your report.



Expandable Regions for Groups

You can intuitively drilldown within grouped lists by expanding and collapsing selected regions. If your application supports real data preview and drilldown, this feature is available in the preview and in the HTML5 viewer. The components included with List & Label support this function out of the box.

... the Backbone of Your Application

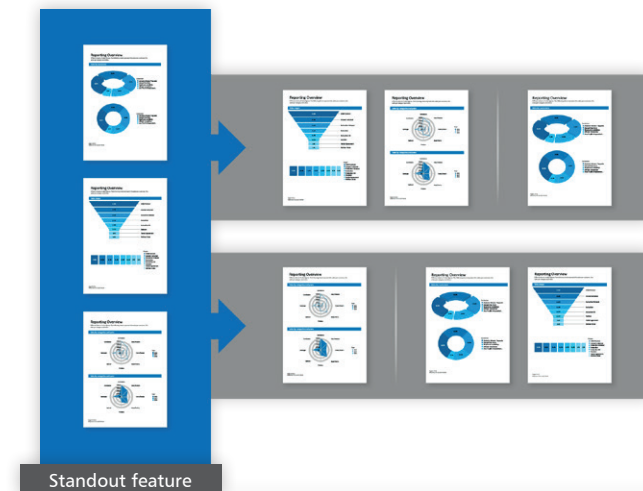


Embedded Export Formats

Export Formats can be embedded in preview files for later export to Microsoft Excel and Word, MHTML and XHTML – in addition to PDF and the graphics formats that LL already offers. Your application must support drilldown; the components included with List & Label already support this feature. It lets your users open the preview file in the free List & Label viewer and export to the specified formats.

Preview Tailored to Your Application

A variety of settings allow you to tailor the preview to your application's look & feel. You can change the colors and shading, plus the selection frame and how page numbers are displayed.



Create Preview From Individual Pages

Break down the preview into your preferred page ranges. You can then recombine the resulting individual files in any order, giving you entirely new ways to restructure an existing report on the fly.

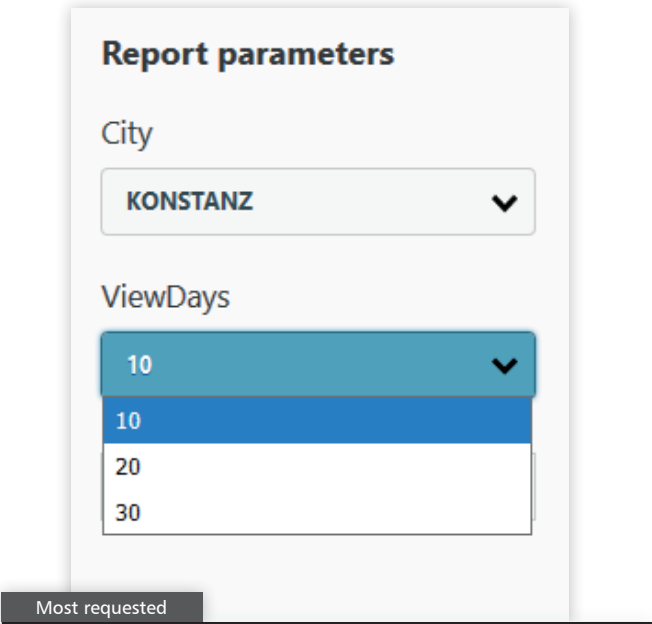
Most requested



Easily Converting Crosstabs to Charts and Vice Versa

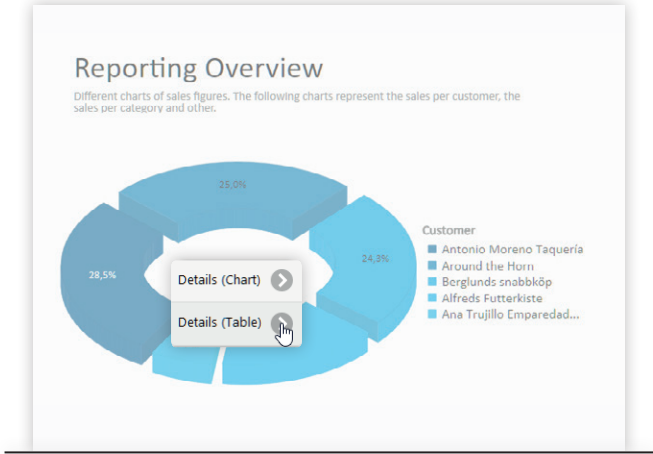
In terms of underlying data, crosstabs and charts have much in common. In reports, a chart is often included with a crosstab to visualize the data. This can now be performed directly from within the object window or ribbon. It is also possible to convert charts into crosstabs.

Web & .NET



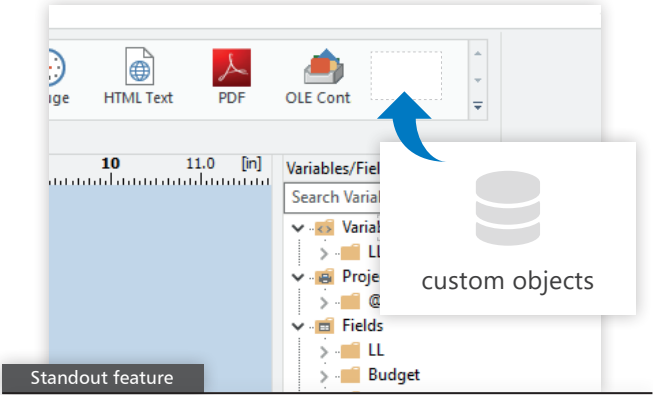
Parametrized Data Sources

Thanks to parametrized data sources, List & Label's powerful filtering options can now be used anywhere. This feature lets you combine data-source parameters with actual report parameters in the Designer. As a result, the parameters of your stored procedure, for example, can be employed as report parameters. The feature is also available for REST and JSON in the Report Server.



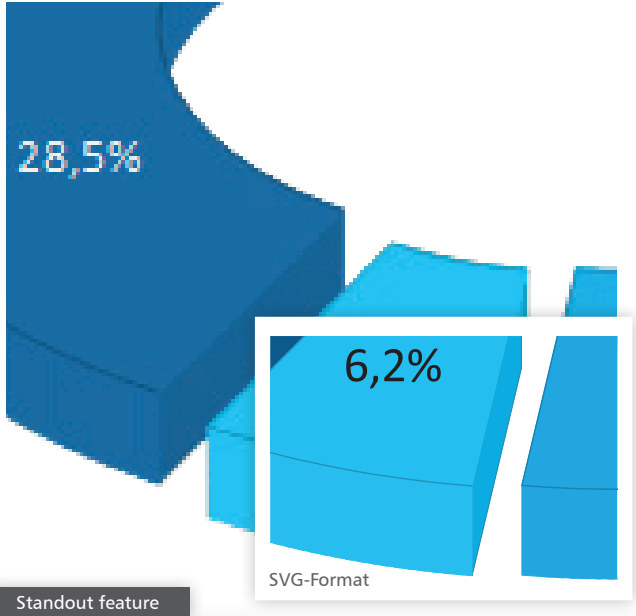
Drilldown Support in the HTML5 Viewer

Drilldown in charts has long been possible in desktop applications. Now we have introduced this functionality to Web reporting. Active link areas can be added to chart segments, and you simply click to access the underlying data.



Web Designer: Custom Objects/Functions

Add your custom Designer functions and Designer objects to the Web Designer configuration on the server. They are then available to clients (also possible for the Report Server). This means the Web Designer – just like our classic Desktop Designer – can be extended in line with your needs.



SVG-Format Charts in the HTML5 Viewer

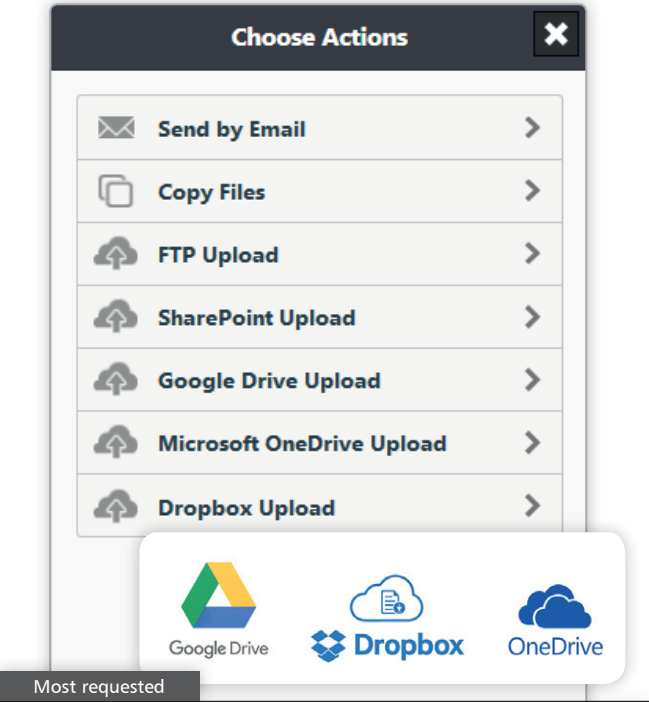
In browsers and when exporting to XHTML, all charts, shapefiles (e.g. for geovisualization) and barcodes are now rendered in SVG format. This means that despite small file sizes, image quality is excellent, even when zoomed.

Other News

The new Web Assembly supports .NET Standard 2.0, which means List & Label can now be integrated into the latest ASP .NET Core Applications.

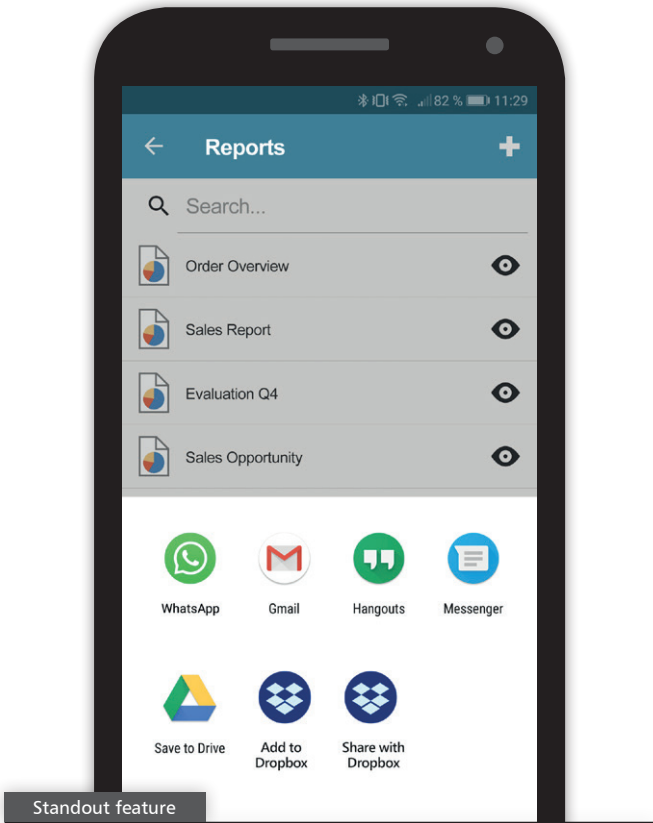
Report Server

(Enterprise Edition)



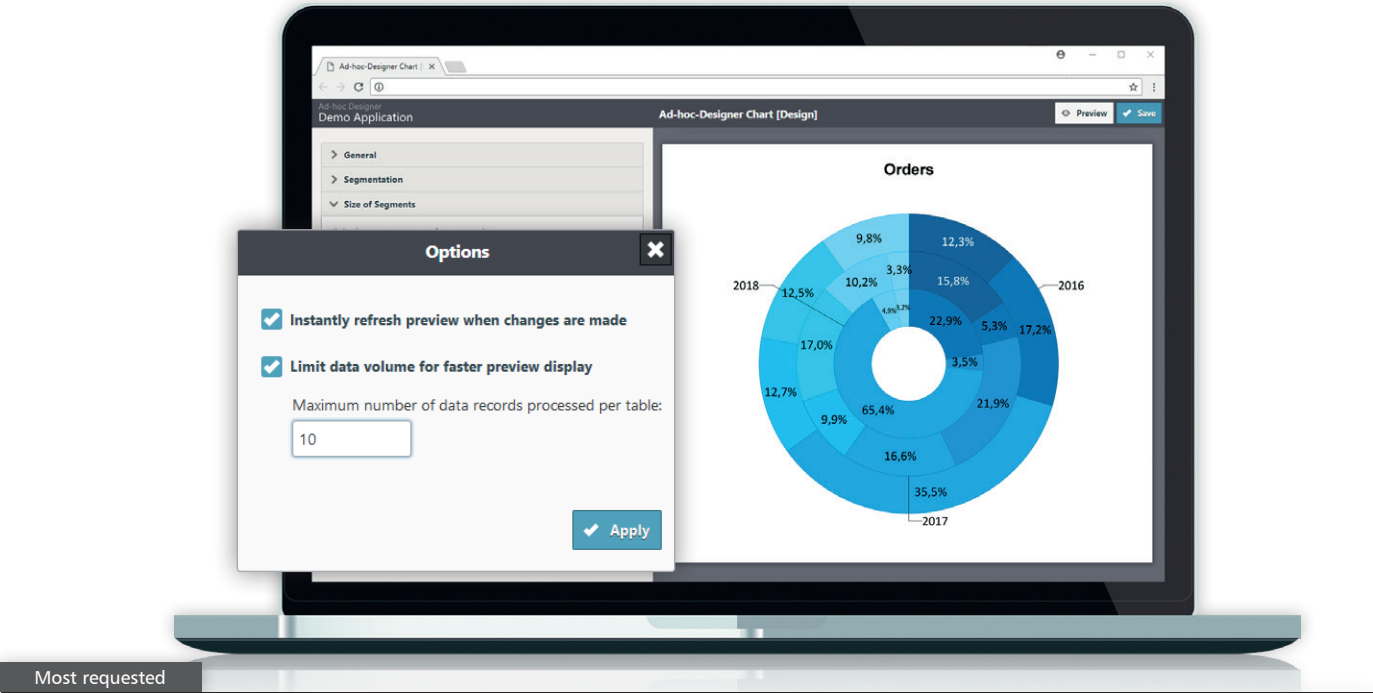
New Actions for Scheduled Reports

In addition to distribution by email, via FTP or Microsoft Share-Point, scheduled reports can now be uploaded to Google Drive, Dropbox, or Microsoft OneDrive.



Native Apps for iOS and Android

The new Report Server apps (to be available from App Store resp. Play Store) let you access key Report Server functions natively on almost any mobile device. The app loads faster than the complete browser-based user interface, and uses very little bandwidth. We currently support Android, iOS and Windows.



Requested Features in the Ad-hoc Designer

Select “Instantly refresh preview when changes are made” to update the preview as soon as the layout has been modified.

For rapid preview generation with extensive data sources, you can now restrict the quantity of data by selecting “Limit data volume for faster preview display”.

Another improvement: you can now select your preferred format for the output date.

Other News

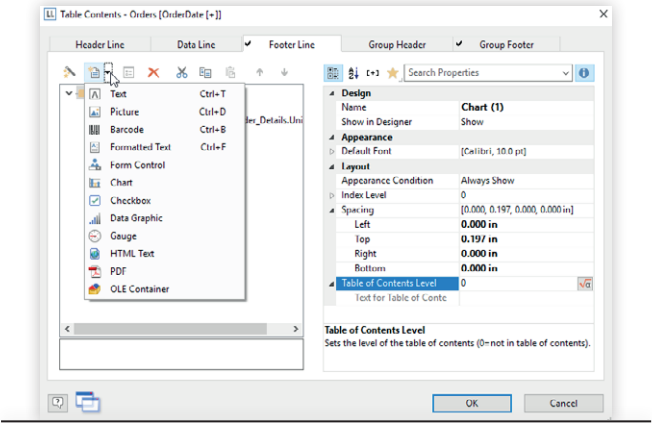
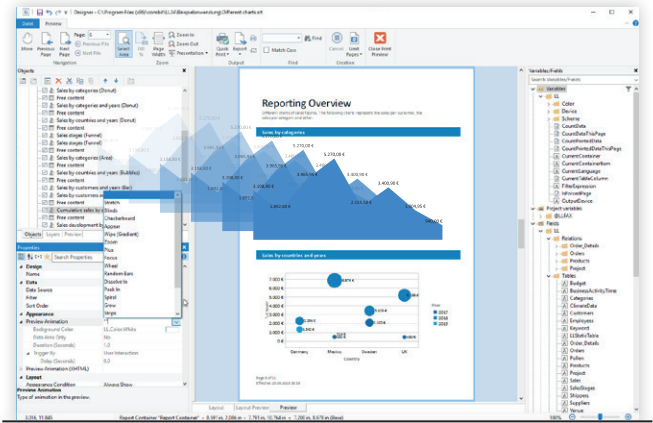
- The way data sources are selected for a report template has been reviewed and improved.
- You can now define HTTP headers for REST data sources, e.g. when a key is required for authentication.
- The REST timeout can be configured to wait for the server to respond when processing large data volumes.
- The Report Server Designer can be distributed as an MSI file, e.g. in line with a group policy.
- Support for OpenAPI offers a quick and convenient way to view the Report Server's REST API specification
- Data sources can now be organized using folders for greater clarity.

Other New Features



Enhanced Performance

We have again succeeded in boosting List & Label’s processing speed significantly. In list projects, you benefit from 20% higher speeds on average, regardless of the data source or development environment. Even greater performance improvements are achievable with ADO .NET when large numbers of 1:1 relations are employed.

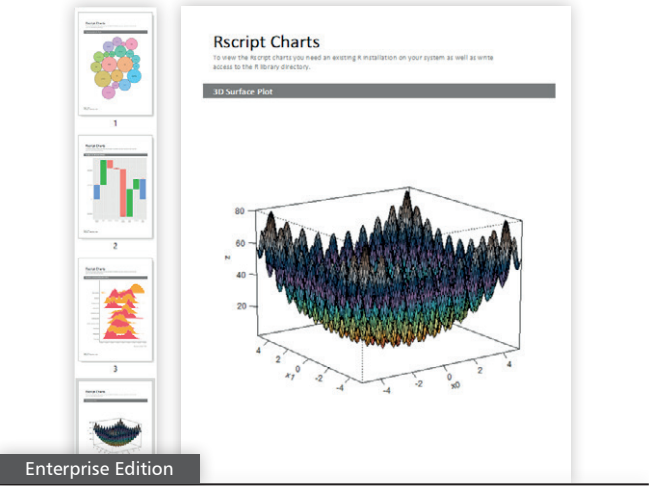


Animations for XHTML Export

We have added an HTML animation property to most objects. You can now animate objects displayed in the browser in a similar way to that possible in the preview window. Simply select one of the nine available animation types and specify the delay and duration. This feature is also available in the Report Server.

Nested Tables

Nested tables are now supported in group headers and header lines. You can include data in group headers quickly and easily from a sub-table. In header lines, this feature is limited to static content.



Rscript for Additional Charts

List & Label already offers a wide variety of charts. But data can be represented in countless ways, and we have connected Rscript to List & Label to give you even greater choice. Rscript is an established language for statistical computing and graphics that supports visualization of virtually any kind. This extends List & Label’s existing report-layout and data-access options to include the huge range of charts and graphics provided by Rscript.



Further Features

- ✓ **NULL Values**
You can now specify whether a null value should be treated as a zero, ignored, or whether it should cause a gap to be left, e.g. in a line chart.
- ✓ **Change to Mouse Wheel Zoom Behavior**
When a user zooms with the mouse wheel, the enlarged region is centered around the cursor position, making it easier to home in on a particular detail.
- ✓ **Support for Additional PDF/A Modes**
List & Label now supports not only PDF/A-1a mode but also PDF/A-1b mode. This is simpler and provides a basic level of compliance with the related standard. Furthermore, PDF/A-3b is available for embedding files of any type in a PDF document.
- ✓ **Keyboard Navigation in the Formula Dialog**
Keyboard navigation in the formula dialog has been revised, making the dialog easy to use without a mouse.

Your Version 24

Subscribers

With an active Professional or Enterprise Edition you already have LL24 included – and you are all set. You'll receive information on the download. If you have already registered your previous version, your update will already be registered and ready to collect. Otherwise, please register the previous version.

New Customers

Start now with version 23 and get version 24 without additional costs, either as a subscription update with the Professional or Enterprise Edition or as a free Standard update. Please register your license by Oct. 24, 2018 and you'll receive information on the download.

www.combit.com

combit GmbH
Untere Laube 30
78462 Constance
Germany

⋮

Sales & Service Team
T +49 (0) 7531 90 60 10
F +49 (0) 7531 90 60 18
service@combit.com



© **combit GmbH 2018**, subject to changes and possible errors! This content is only a description and does not represent a guarantee for the quality of the product. Please note that with the third-party product versions that are mentioned, different releases may occur that include other functions. We therefore recommend trying out our free of charge trial version in order to avoid any possible problems in advance. All named products and product descriptions as well as logos are brands, registered trademarks or the property of their respective owners.