

Teaming for Success

# List & Label 25



## LL25 Highlights

### **Designer & Preview**

Horizontal fill mode for columns, sub elements via filter conditions, automatically adjusted column widths, grouped line definitions, new image formats ...

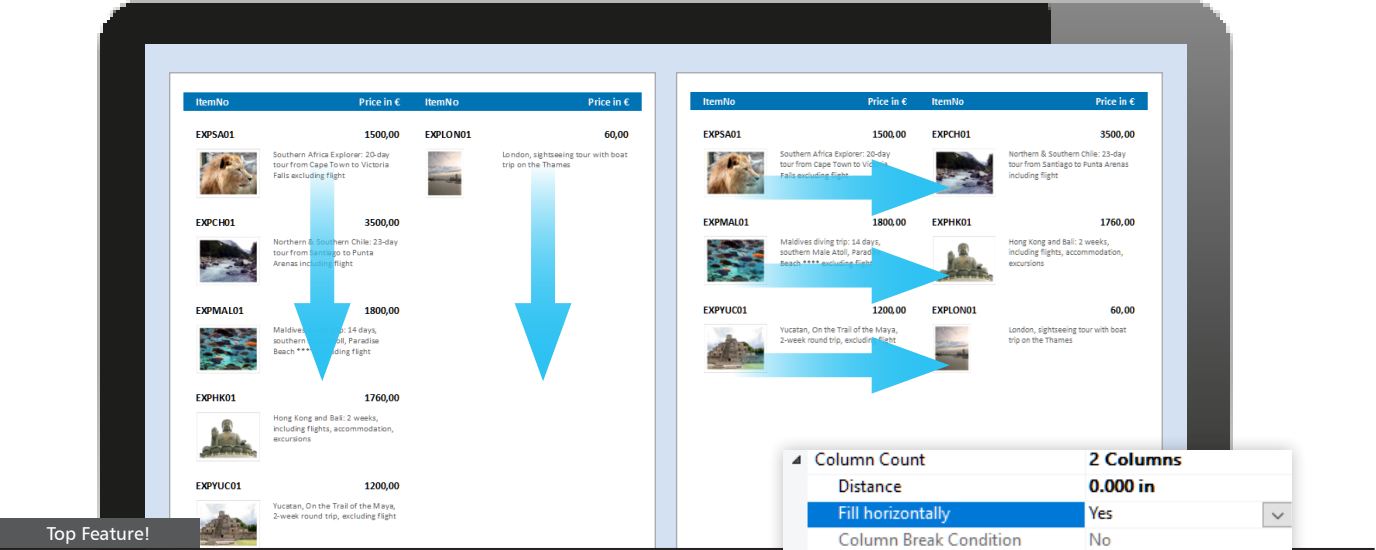
### **.NET, Web & Report Server**

.NET Core 3.1 support, GraphQL data provider, support for using SQL stored procedures, parameter assistant, compound primary keys, import and export, webhook actions ...

### **Export**

Support for ZUGFeRD 2.0, append signature when sending emails, export without page breaks, JSON as new target format ...

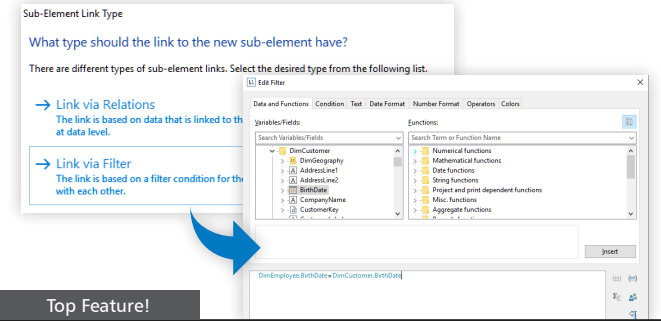
# Designer & Preview



## Horizontal Fill Mode for Columns

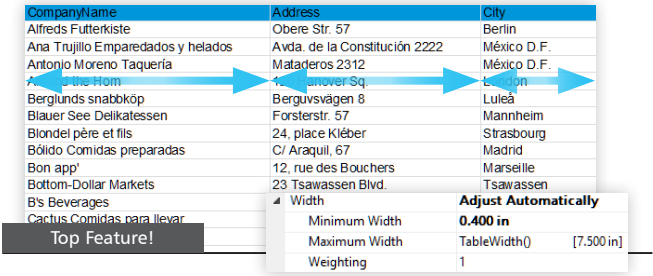
Use available space more efficiently for multi-column layouts that are output from top to bottom in newspaper format. For sub-elements, the number of columns forces horizontal output. This

results in completely new layout options, where the linked data records are output from left to right in one space-saving row.



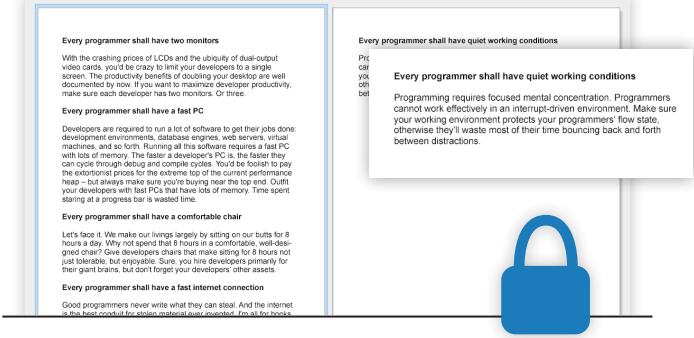
## Create Sub Elements Using Filter Conditions

In the past, if you wanted to use relations in the Designer, you had to define them as a relation in the data source. When you create a sub-element in the Designer, you can now use filters to quickly and easily define a "relation" on the fly.



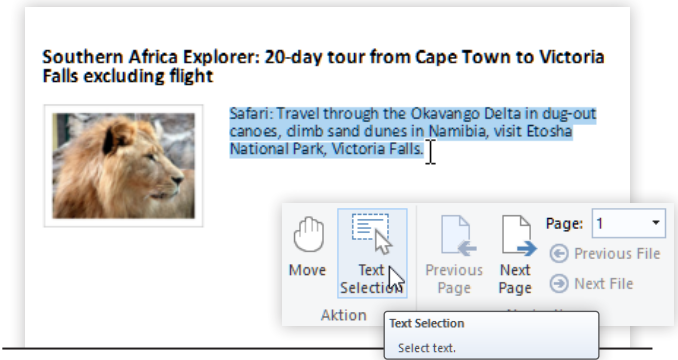
## Automatically Adjust Column Widths

Until now, you had to manually adjust column width to content. As a result, columns were often displayed with too much free space or whitespace, or even with breaks. Now, you can have List & Label calculate the ideal width, based on the actual content.



## Grouped Line Definitions

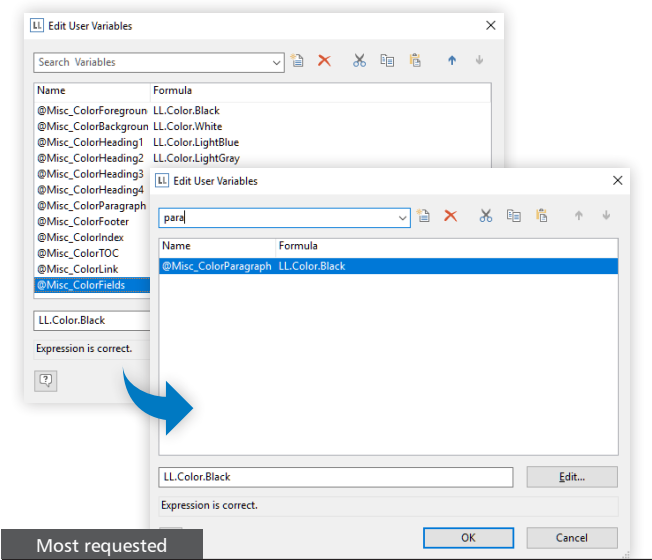
You can now easily design much more flexible page-break scenarios for many row definitions by grouping only the lines that actually belong together, in line with your specific requirements.



## Select and Copy Text

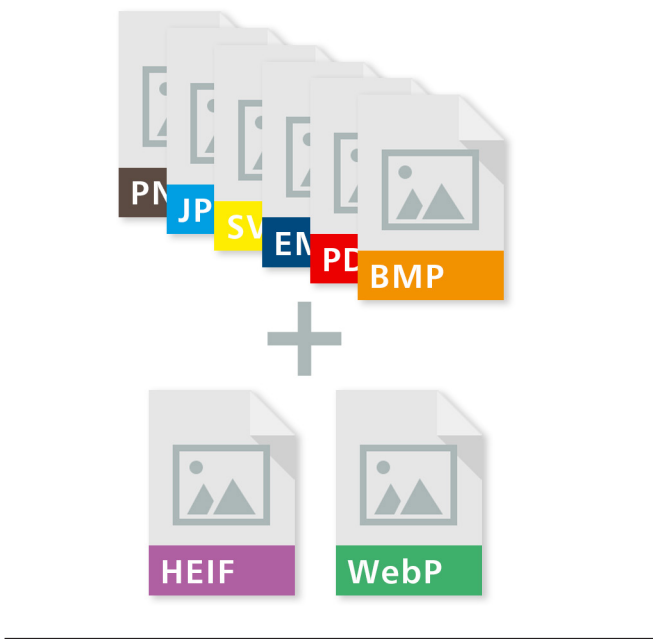
Quickly and easily select text in the preview and copy it to the clipboard – with no additional steps. This enables you to use and process information from the preview even more efficiently.

# Formats & More



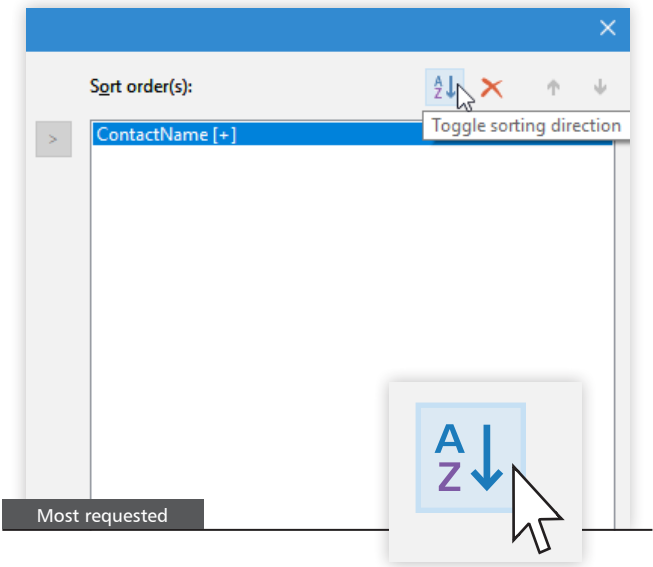
## Sum and User Variables

Faster overview and more efficient work in complex reports thanks to dialogs with filter functions. This now also enables you to filter the list of sum and user variables.



## Image Formats HEIF and WebP

Under Windows 10, you can use these two new image formats as graphics in the Designer. This provides more modern formats for flexible and lossless compressed images.



## Rapidly Change Sorting

To change the sorting direction from “ascending” to “descending” or vice versa, simply double-click on a sort order or click on the corresponding button.

## More Designer Innovations

- ✓ **Improvements to Charts**
  - Rscript: Direct support is provided for HTML widgets when exporting to XHTML or the HTML5 Viewer.
  - Gantt: Minimum cell width can be set for columns in the table area to better support aligned layouts.
  - The range for the x-axis can now be explicitly set as needed – for example, to selectively display certain date ranges.
  - The x-axis now supports a logarithmic scale for numerical values, which is useful for scientific charts.
- ✓ **Significant Performance Improvement in the Preview** – especially when page count is high.
- ✓ **Project Wizard also Available in 64-bit Applications**
- ✓ **Customized Interface**  
For seamless and modern Windows integration, the Designer has new icons in the TreeViews. Mouse cursors are HDPI aware, and much more.

# Innovations for .NET & Web



## Comprehensive .NET Core 3.0 Support

List & Label supports the latest Microsoft technologies and provides full support for .NET Core 3.1:

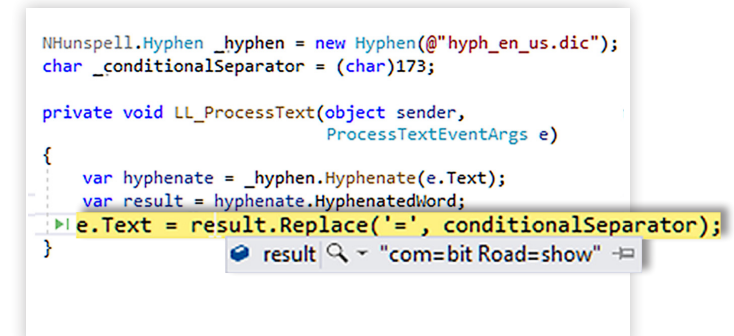
- Visual controls for WinForms and WPF, such as the WinForms PreviewControl or WPF Viewer, can now be used.
- New NuGet packages for all assemblies ensure easy integration and redistribution.
- Web applications no longer require compatibility shim.
- Numerous programming examples delivered with List & Label have been created directly with .NET Core 3.1, for easier implementation or migration.

.NET Framework 2.0 and the .NET Client Profile are no longer supported. However, full support is provided for .NET 4.x and the latest language standards and technologies.



## GraphQL Data Provider

The modern open source database query language can now be used directly as a data source for List & Label. It provides an efficient and flexible alternative to SQL – in line with REST and ad-hoc web service architectures. This makes for fast, effective data queries.

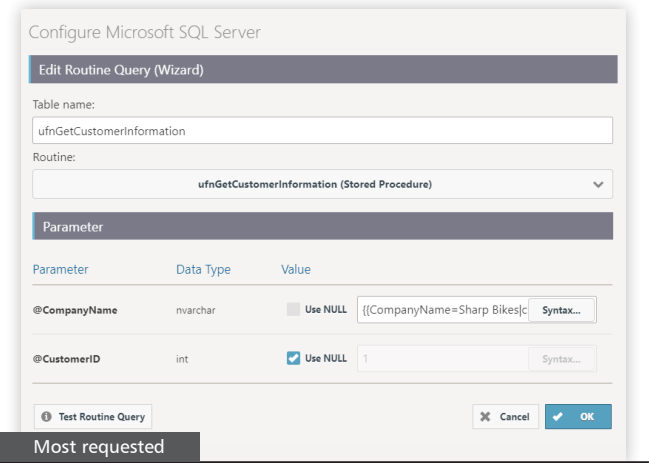


## Hyphenation and Translations

In .NET, the new `ProcessText` event is available, enabling translation or hyphenation before printing or exporting. The event can also be used for RTF content.

# Report Server Data Sources

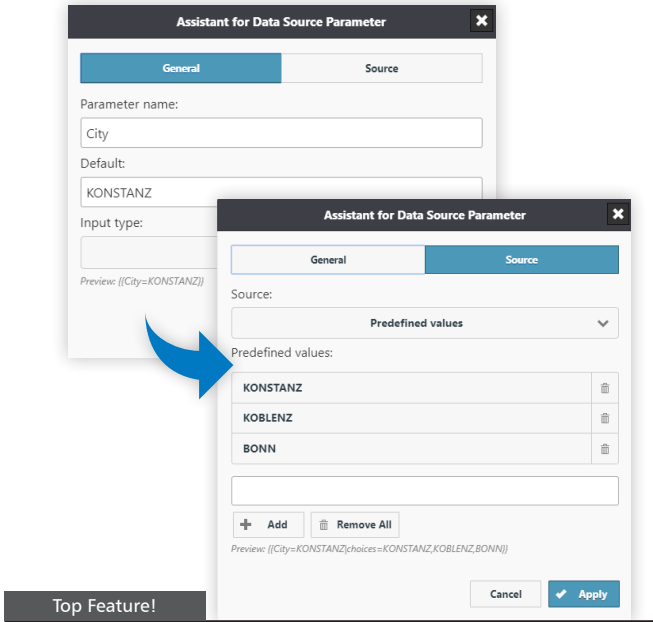
(Enterprise Edition)



Most requested

## Using SQL Routines

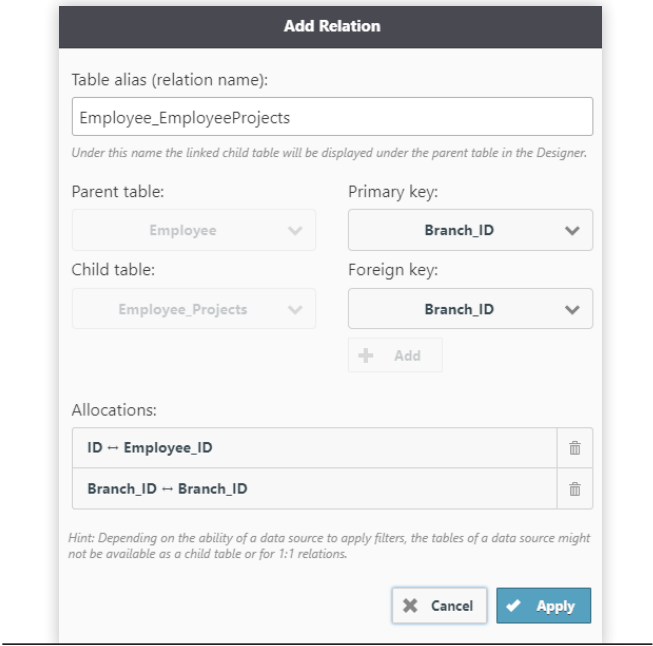
For some supported SQL data sources, stored procedures or table-valued functions can be defined as data sources in the Report Server.



Top Feature!

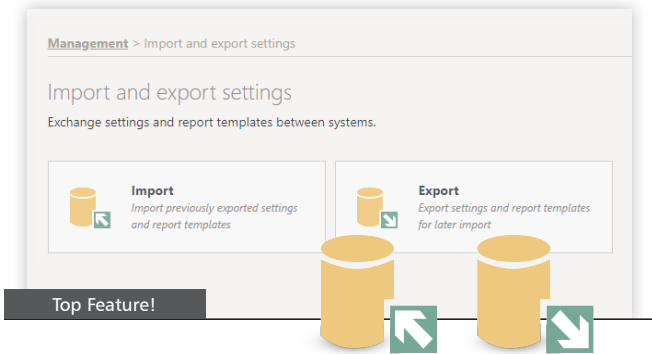
## Assistant for Data Source Parameters

Up to now, you had to create dynamic report parameters for a report manually. Now there is an easy-to-use assistant to support you.



## Composite Primary Keys

It is often necessary to define relations between two tables via more than one field. With the new option for defining compound primary keys, this could hardly be easier.



Top Feature!

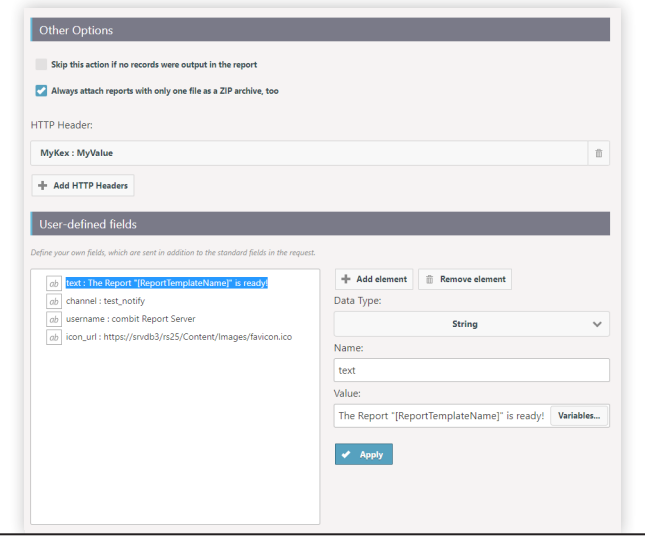
## Importing & Exporting Settings

Now you can transfer the settings of one Report Server installation to another installation. Export users, groups, export profiles, data sources, report elements, report templates, and folder structures. Or select only individual report templates with their data sources and report elements. This makes redistribution much easier.



# More New Features in the Report Server

(Enterprise Edition)



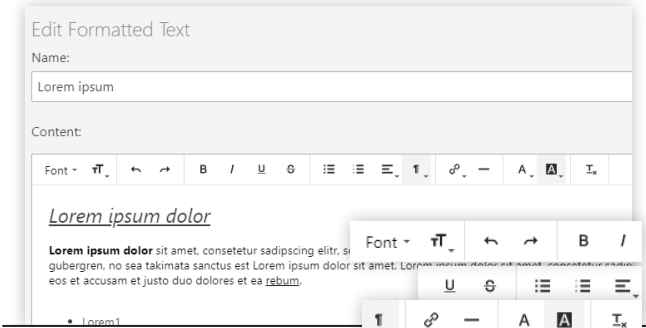
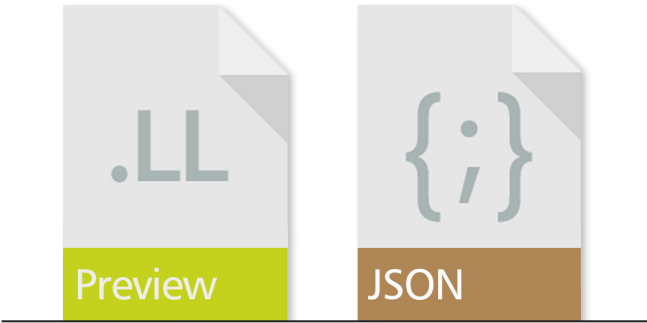
## Webhook as New Action

You can now configure a webhook for scheduled reports. The technology builds a bridge to other web applications such as Slack, Microsoft Teams, and Mattermost. This allows notifications about successfully generated reports, for example. In addition to the connection data, you can also specify user-defined fields for the notification, which can then be evaluated on the receiver side.

## New Export Formats

**JSON** — a modern, compact data exchange format and the de facto data standard for web applications.

**List & Label Preview** — the internal preview format (\*.LL) can now be created directly from the Report Server and displayed and printed in the usual way using the independent List & Label Viewer.



## WYSIWYG Editor Modernized

Formatted text can be quickly and easily created for report elements using the revamped editor, enhancing ease of use.



## Manage Connection Strings

For data sources with a connection string, such as Microsoft SQL Server or Oracle Server, different configurations can now be managed – including syntax highlighting. This enables the connection data to be decoupled from the data source, allowing quick-and-easy central changes to the SQL server name.

### More Features

✓

**New Option for “Copy Files” Action**  
When running a scheduled report, more than one file may be created, depending on the export format. With the help of “Create single ZIP archive”, the result can now be packed in a compact archive.

✓

**Report Templates Used in Data Sources**  
For each data source, you can now easily display the list of report templates that use them. This allows you to rapidly identify unused data sources.

✓

**JSON with Main Table**  
The main table for JSON-based data sources can now be specified – for example, to make reports in invoice format.

✓

**OData Header**  
Optional HTTP headers definable for OData data sources.

✓

**Footers in Ad-hoc Designer**  
In the Ad-hoc Designer, you can determine whether the table footer should be displayed only on the last page.

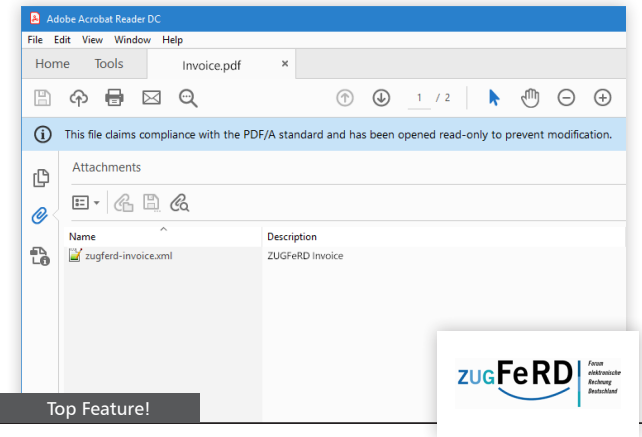
✓

**Report Parameters in REST API**  
When calling a scheduled report using the REST API, you can now specify report parameters.

✓

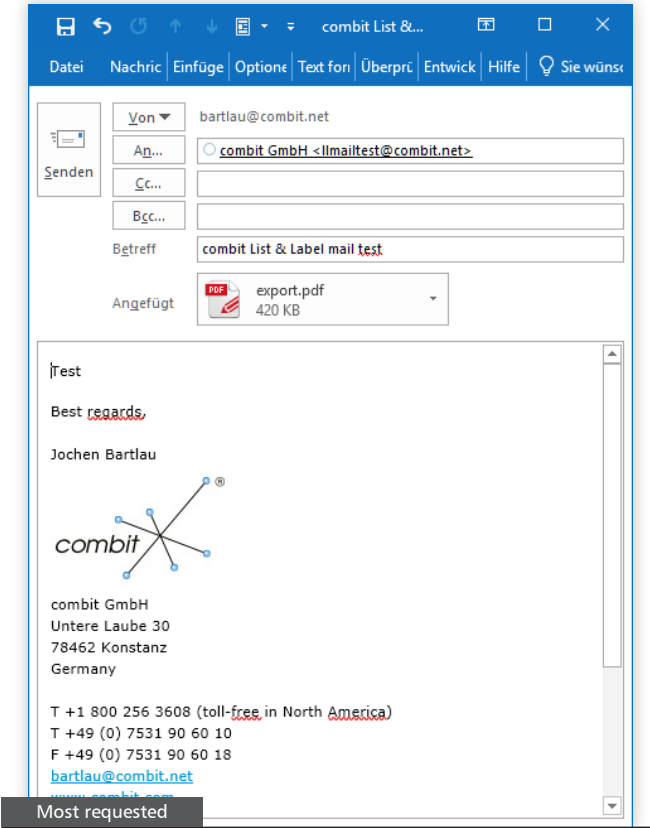
**Using GraphQL as a New Data Source**  
Just like in List & Label, GraphQL can be used as the data source for reports in the Report Server.

# Export



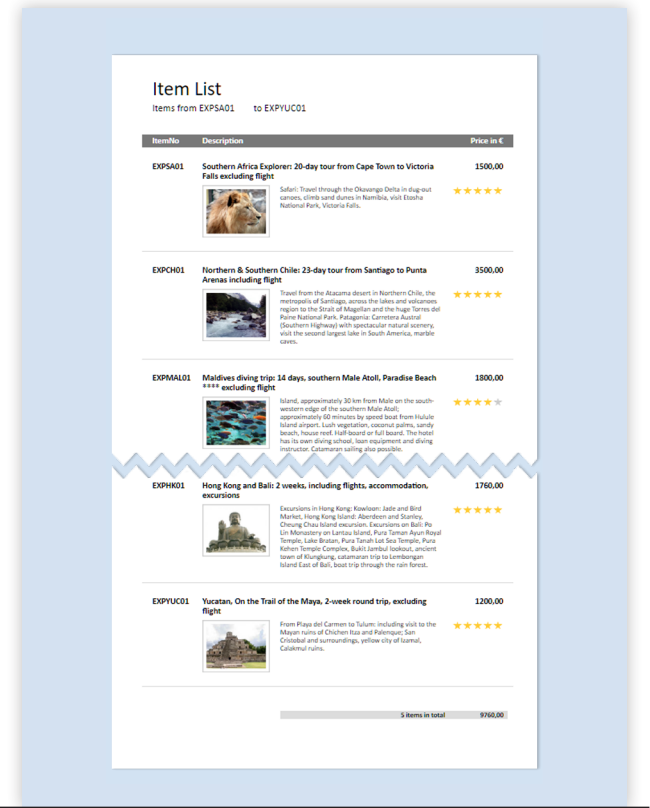
## Support for ZUGFeRD 2.0

For electronic invoice exchange in PDF format the updated standard ZUGFeRD is now supported. In combination with the XML file containing the technical billing information delivered by the application, List & Label creates a compliant ZUGFeRD 1.0 or ZUGFeRD 2.0 PDF invoice.



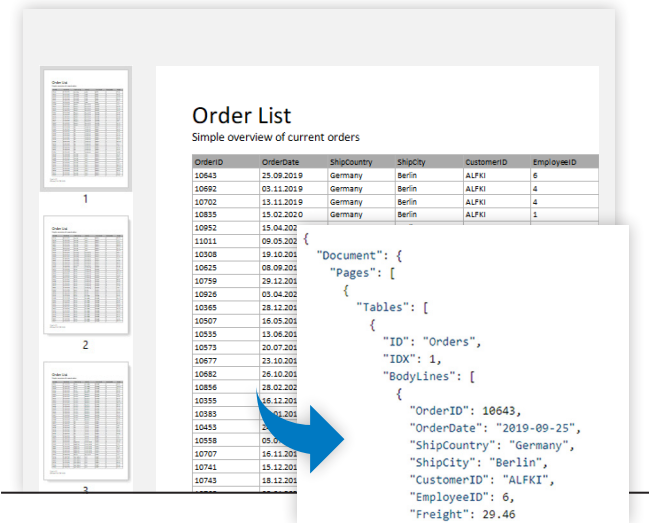
## Append Signature when Sending Emails

When sending emails, you can now easily add the Outlook signature by simply specifying its name. But even without an Outlook installation, you can specify an email signature using a text and HTML file.



## Export Without Page Breaks

For the formats HTML, JSON, and Excel, you can now define the page format as endless, avoiding page breaks. An endless page is the natural format for browsers or Excel and is also often expected by users.



## New Export to JSON Format

In addition to the existing text-based export formats – CSV, XML and text – List & Label now directly provides the popular exchange format Java Script Object Notation (JSON). The format is especially popular for web applications.

# Your Version 25

## Subscriber

With an active Professional or Enterprise Edition, you already have List & Label 25 included – and you're all set. You'll receive information from us on the download automatically. If you've already registered your previous version, your update will already be registered and ready to collect. Otherwise, please register the previous version.

## New Customers

Start immediately with version 25 and download your free trial version at [www.combit.com/trial/](http://www.combit.com/trial/).

# www.combit.com

combit GmbH  
Buecklestrasse 3-5  
78467 Constance  
Germany

⋮  
⋮  
⋮  
⋮  
⋮

**Sales & Service Team**  
T +49 (0) 7531 90 60 10  
F +49 (0) 7531 90 60 18  
[service@combit.com](mailto:service@combit.com)



© **combit GmbH 2020**, subject to changes and possible errors! This content is only a description and does not represent a guarantee for the quality of the product. Please note that with the third-party product versions that are mentioned, different releases may occur that include other functions. We therefore recommend trying out our free of charge trial version in order to avoid any possible problems in advance. All named products and product descriptions as well as logos are brands, registered trademarks or the property of their respective owners.